



LuttHigh



Lutterworth High School Academy Trust

Friday 24th April 2026



Dear Parent/Carer

Welcome to our weekly newsletter which is action-packed with lots of competition as one of our 4 Cs of the Emerald Way and also lots of celebrations of success.

Well done to everyone who has participated in sport this week. We've had some excellent results as well as our Sports Leaders doing a fantastic job of supporting primary students at Saffron Lane. Also, well done to Lutterworth Town u16 on winning the league! At LHS, competition is all encompassing, so I would like to congratulate our students who qualified for the international Pink Kangaroo Maths Challenge, which took place this week.

Next week, we will be continuing to speak to students regarding our school uniform and the proposed government changes.

I wish Year 11 all the best with their examinations next week. We have Spanish and French speaking examinations throughout the week. We had an excellent turnout for our final Year 11 Parents' Evening and it was lovely to give so much positive praise for how hard our Year 11 are working.

Have a nice weekend.

Kind regards

Julian Kirby
Headteacher



NOTICEBOARD



HOW TO REPORT A CONCERN AT LUTTERWORTH HIGH SCHOOL



Tell a teacher, your tutor or go to KS3/KS4 Hubs to speak to a member of staff



Tell your parents or a friend, who can report on your behalf



Self report to
ks3@lutterworthhigh.co.uk
ks4@lutterworthhigh.co.uk



Forms outside KS3 and post in the letterbox



Speak Out button on the school website
www.lutterworthhigh.co.uk/student

Attendance

Year 7	95.8%
Year 8	94.3%
Year 9	93.4%
Year 10	92.5%
Year 11	93.2%
Whole School	93.9%

House Points

KS3	Tammi Scott 7HE (60)	Theo Barnes 7LJ (54)	Charan Bhambhra 8HW (60)	Elsie Baldwin 7LA (55)
KS4	Nicholas Wride 11HN (82)	Jamie Styring 11HN (93)	Ethan Styring 11HM (62)	Charlie Treacy 11HN (63)

Distinction Awards Well done to the following students who have achieved distinction awards this week.

Louie Bailless 11FR	Muneni Mukombo 8HH
Bea Bailey 8HH	Arthur North 7LA
Sebastian Barron 8HH	Maria O'Connor 11SP
Ruby Blockley 11HC	Carla Painter 11SP
Finn Brown 11FR	Amelia Parsons 7LA
Harry Chapman 9HH	Maya Patel 11SP
Daisy Crosskey 11SP	Iris Pateman 11FR
Alfie Deas 8LA	Noah Peters 8HH
Lucy Eales 11HN	Forrest Pett 7LL
Edward Elliott 11SP	Bobby Richardson 11HC
Jess Ford 11SP	Erin Sandland 11SP
Chloe Fradley 7LA	Imogen Sheath 8HH
Luke Green 9LH	Thomas Sibson 10LK
Amelie Hall 9HA	Lucas Simmons 8LB
Oscar Hayward 11HG	Bobby Stenhouse 11HM
Ella Hodgkinson 8HH	Jamie Styring 11HN
Theodore Hunter 8HH	Harley Tedds 11HG
Ethan Ingram 9HA	Jayden Thompson 8HB
Ryan Ji 8LB	Ben Turner 11SP
Jake Kilby 11SP	Arabella Watson 11HM
Hannah Lane 11FR	Isabelle Wilkinson 7HM
Alfie Lennon 11FR	Emma Willars 8LB
Pavan Marwaha 7LA	Alex Winterton 11FR
Taylen Milbourne 7LA	Ava Woodward 11SP
Ruby Morris 11HC	Ameerat Yekini 9HA
Finley Mortimer 11HN	

NOTICEBOARD

Hot Choc Friday

Well done to the following students who have achieved a Hot Choc Friday this week.



Student Achievement

Congratulations to Frankie Wilkins for achieving grade 5 drums with Distinction!

Student Achievement

Congratulations to the student pictured below who played the final tournament for the season at the Worcester International Hockey Centre. Her team Northants won the U15 Girls title for the 2025/26 season!

This was a five counties competition covering Shropshire, Worcestershire, Warwickshire, Staffordshire & Northamptonshire. A fantastic achievement.



Thank You!

We were very lucky to receive a kind and thoughtful card and a delightful array of baked goods and treats from one of our parent/carers.

We didn't get a name and would love the opportunity to thank you for your generosity! Please get in touch!



50 Tie

Congratulations to the student below who achieved their 50 tie. This is awarded to students when they have represented the school in 50 competitive fixtures! Well done!



NOTICEBOARD

Technology Rotary Challenge

Last month, the students below attended the Technology Rotary Challenge and they just missed out on receiving a prize. Neil Williamson, product engineer for Cummins Inc. was on hand to help on the day and said that the group worked really well together, their design was excellent and he thought they deserved a prize! He organised some Cummins Inc. merchandise and a £20 Amazon voucher for each of the students for their efforts on the day. The students were so thankful and happy to receive the prizes for their hard work. Thank you to Neil and well done to the students for their hard work!



Revision Block 3

Monday 13th April to Friday 8th May 2026

	Monday	Tuesday	Wednesday	Thursday	Friday
Before school 8.15am - 8.30am	English	Biology - Rm16 6 mark questions	Physics - Rm16 6 mark questions	Chemistry Rm16 6 mark questions	English
Lunchtime		DT - NEA		Geography - Rm7 (selected students only) Computer Science Rm13	
After School 3.15 – 4pm	Maths F Rm5 H Rm1 Drama drop in Drama studio Spanish Rm14 French Rm15 Sports Studies Rm 13	English - 4/5 RmE2 English 7+ RM E4 Business - Invite only Dance	GCSE PE Rm13 Drama drop in - Drama studio RE	Science F Rm17 History Terrace, JKl	Geography Rm8 RLE
After School 4pm – 4.45pm		DT Revision Business D3	Food D3	Science H LH	

Silver Duke of Edinburgh Practice Weekend

Our Year 11 students recently completed their Silver Duke of Edinburgh practise weekend, camping in Napton and walking through to Draycote Water. They were a brilliant group and a real credit to the school and to their parents/carers.

Throughout the weekend, students demonstrated excellent teamwork and problem-solving skills. When challenges arose, they worked together to resolve them with maturity and resilience. There were a few sore shoulders and tired feet along the way, but these were met with determination, good humour and developing outdoor skills.

The weather could not have been better – clear spring sunshine, neither too warm nor too cold – providing perfect walking conditions and stunning views, including beautiful sunsets and sunrises.

Most importantly, the weekend offered a valuable break from revision, giving students the chance to switch off from phones, enjoy each other's company and make lasting memories. A hugely successful and rewarding experience for all involved.



Pink Kangaroo Maths Challenge

Before Easter we had the Intermediate Maths Challenge, and we reported that 3 students had done exceptionally well and qualified to take part in the Pink Kangaroo follow on round. [There are 6 million worldwide participants in the Kangaroo competition and it is so named to acknowledge the part Australians made in establishing large-scale maths contests].

We had 3 students qualify for it and they achieved 1 Bronze and 1 Gold and 1 Qualification.

Amy Thomas Bronze (Best in Year 10)
Aidan Connor Qualification
Maria O'Connor Gold (Best in School)

Well done to these students for doing so well in what is a very difficult challenge. Next week we have the Junior Maths Challenge, where the best Mathematicians in Years 7 and 8 have the opportunity to show what they can do.

We will keep you posted!

Mr Johnson, Mathematics Teacher & Rugby Coach

SPORTS HIGHLIGHTS

Sports Leaders

Our Sports Leaders have had a busy week! They represented the school brilliantly at Saffron Lane Athletics Stadium for the Primary Disability Athletics event, where they demonstrated excellent leadership skills throughout the day, encouraging the students and helping to officiate the events.

We also hosted the Primary Schools Netball Tournament, where all of the leaders were keen to help. They supported the event by umpiring matches, keeping score, and encouraging all of the participants.

A big thank you to all of our Sports Leaders for their hard work, enthusiasm and dedication this week.



Cricket U15s

On Monday, our U15s played Leicester Grammar in the County Cup. We narrowly lost by six runs. The final score was LGS 136 - 6. LHS 130 - 7.

Tom Sercombe was exceptional as captain and led the way with some strong bowling from the off. This was backed up with Rhianna as she kept the score down with some excellent line and length with her deliveries.

Charlie took two good catches in the field and did well with the bat.

The game was won by Leicester Grammar in the last over. Both teams played some excellent cricket, well done to all involved.

SPORTS HIGHLIGHTS

Lutterworth Varsity Rugby 2026

This week has once again seen the inter-Lutterworth school rugby matches between ourselves and Lutterworth College. In a change to recent years, this year the Varsity took the format of being spread over a number of evenings.

All of the games were played with fantastic spirit and the lads thoroughly enjoyed being able to play against their club team mates and call their friends the opposition until the final whistles blew.

The results were as follows:

U12s: Lutterworth High 20 - 40 Lutterworth College

U13s: Lutterworth High 10 - 10 Lutterworth College

U14s: Lutterworth High 7 - 48 Lutterworth College

U12s: Lutterworth High 7 - 7 Lutterworth College

Unfortunately, Lutterworth College were not able to field a girls side this year and so that match could not take place. However, the fact that two of the four games resulted in draws reflects how closely and fiercely contested the games were.

Lutterworth Town U16s Football

Congratulations to the Lutterworth Town U16s team who won the Division 7 of the Leicestershire Youth League this week, with one game to spare! They play their final league game this Sunday at Dunley Way (3pm) where the championship will be celebrated.

Congratulations to the students below.



COMMUNITY NOTICES

Heads Up—ADHD Support

The ADHD Parent/Carer Support Service, commissioned by Leicestershire County Council, offers free workshops and peer support for families living in the Leicestershire County districts. Parents and carers of young people under 19 can access support at any stage of their ADHD journey, whether they are exploring the possibility of ADHD, waiting for an assessment, already diagnosed, or not seeking a diagnosis at all. Alongside monthly peer support groups, the service provides practical workshops for both adults and children to help families understand ADHD and apply strategies to manage real-life challenges.



The registration link can be found [here](#) and can be shared with families.

Mental health and wellbeing support

To view the brochure, click [here](#).



Mental health and wellbeing support

Information about services across Leicester, Leicestershire and Rutland that provide support for your mental health and wellbeing.

Alex found their anchor

Dedicated help which eased their anxiety

Find local support & activities

Find what matters to you at

Better Mental Health for all

Leicester, Leicestershire and Rutland
Health and Wellbeing Partnership

NHS

V1 SEPTEMBER 2025

COMMUNITY NOTICES



Mental Health Support in Leicestershire

GUIDE FOR YOUNG PEOPLE

In this guide you will find information, advice and support on your feelings and mental health, from these Leicester, Leicestershire and Rutland services:

Health for Teens – www.healthforteens.co.uk

ChatHealth – www.chathealth.nhs.uk/start-a-chat

Tellmi – www.tellmi.help

My Self Referral – www.myselfreferral-llr.nhs.uk

Leicestershire Educational Psychology Service – www.bit.ly/3XxsrqF

ALWAYS REMEMBER:

IT'S OKAY NOT TO BE OKAY, AND YOU ARE NOT ALONE.



Leicester, Leicestershire and Rutland
Health and Wellbeing Partnership



Hey, how are you feeling?...

There are lots of things you can do to keep yourself well and feeling good, like:

- Getting a good night's sleep
- Doing something you enjoy like playing games
- Spending time with friends and family
- Exercising and eating well to look after your body
- Learning a new skill or taking on a challenge
- Helping other people
- Spending time outside in nature

... I feel great! I am happy and healthy



... I'm okay, but I sometimes feel a bit worried or sad

It's normal to feel this way. We all experience lots of emotions and these can change over time.

Try some of the things in the box above and talk to someone about how you're feeling. This could be your friends, a parent or carer - or a teacher or adult at school.



If you're struggling, it's important to speak to someone. People want to help you. If you need it, you or your parents or carer can support you to get professional help. A good place to start is by talking to a mental health and wellbeing lead or trusted adult at school, or your GP.

You can also find free and safe support on these websites:

- Kooth: www.kooth.com
- Health for Teens: www.healthforteens.co.uk

... I am struggling and need some help

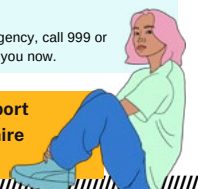
... I am so upset or overwhelmed that I need help now

If you need to speak to someone urgently, you or a parent or carer can call the Mental Health Central Access Point on **0800 800 3302** or **NHS 111**. The lines are open 24/7.

If there is an immediate or life-threatening emergency, call 999 or attend A&E. People are there and ready to help you now.



For more advice about mental health support for young people in Leicester, Leicestershire and Rutland, scan the QR code.



COMMUNITY NOTICES



Leicestershire Partnership
NHS Trust

**Families, Young People, Children, Learning
Disabilities, and Autism Services (FYPC LDA)
Speech & Language Therapy Service**

Rutland Building
County Hall, Leicester Road
Glenfield
Leicestershire
LE3 8RA
Telephone: 0116 295 5256
www.leicspart.nhs.uk



“DLD Together” Parent Information Day



For parents of children diagnosed with **Developmental Language Disorder**



Fri 8th May 2026, 9.15am–2.45pm

Plus optional session: DLD in secondary school, 2.45-3.15pm



New Parks House, Pindar Road, Leicester, LE3 9RN

★ Booking Essential! ★

To request a place:

Parents/carers only (No children)



Scan the QR Code with your mobile phone camera and tap the link.

Or use this weblink: [DLD Together Parent Information Day – Fill in form](#)

If you do not have access to a smart phone, call SaLT admin: 0116 295 5256

COMMUNITY NOTICES



Picnic in the Park An Inclusive Celebration Event

Thursday 28th May 2026 1.30-3pm

The Pavilion, Leicestershire County Council,
Leicester Road, Glenfield LE3 8RA

This is a FREE event with a range of fun 'have a go' activities together with the usual stallholders that attend Local Offer Roadshows. Please feel free to bring a picnic for you and your family. We can't wait to see you...

This event requires adult supervision at all times.

Come and join us to celebrate the Children and Young People of Leicestershire.

Scan here
to book tickets



To find out more about the SEND
Local Offer in Leicestershire please visit:

leicestershire.gov.uk/send

eServices

KEEPING US CONNECTED

EduLink

The EduLink App provides a convenient and accessible way for us to communicate with parents on some of the main aspects of daily school life.

It's easy to use and is accessible from a smart phone, tablet or PC. You can use the app to report an absence easily and also book appointments for your child's Parents' Evening.

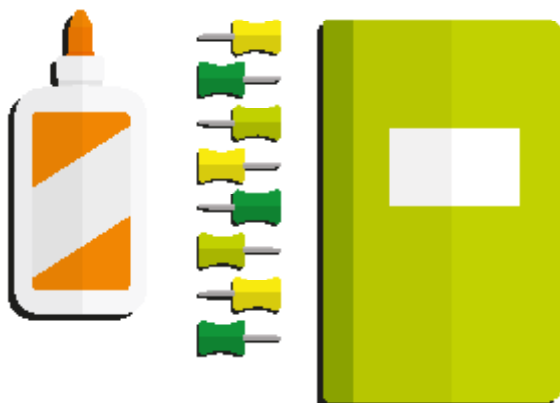
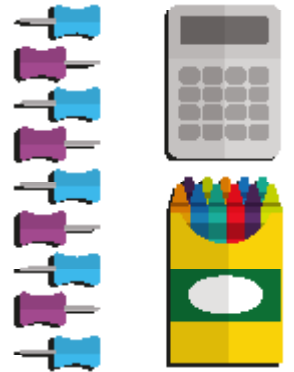
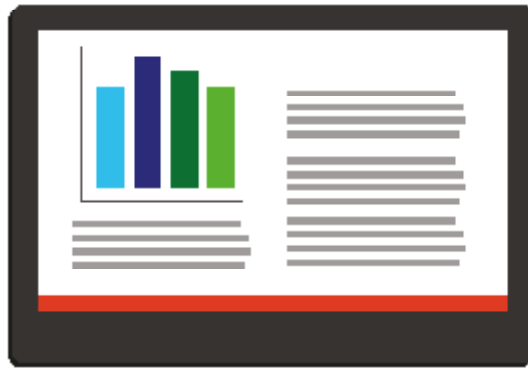
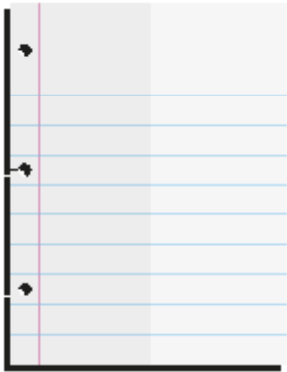
If you haven't already been issued with login details, please contact the EduLink team on the below email address edulinkapp@lutterworthhigh.co.uk.

NEED HELP?

If you have any queries or need IT assistance, do not hesitate to email eservices@lutterworthhigh.co.uk



OFFICE 365 - STUDENT ADVANTAGE & TEAMS



Stock up for academic success with free Office.

Students get a complete version of the latest Microsoft Office for free to use for as long as they're students!

Visit our the website and go to Menu - Students - Student Zone

DATES FOR YOUR DIARY

AUTUMN TERM 2025	FROM THE MORNING OF:	UNTIL THE END OF:
Autumn 1st half-term	Tuesday 26th August 2025	Friday 17th October 2025
Mid-term break	Monday 20th October 2025	Friday 24th October 2025
Autumn 2nd half-term	Monday 27th October 2025	Friday 19th December 2025 at 12.30pm

SPRING TERM 2026	FROM THE MORNING OF:	UNTIL THE END OF:
Spring 1st half-term	Monday 5th January 2026	Friday 13th February 2026
Mid-term break	Monday 16th February 2026	Friday 20th February 2026
Spring 2nd half-term	Monday 23rd February 2026	Friday 27th March 2026

SUMMER TERM 2026	FROM THE MORNING OF:	UNTIL THE END OF:
Summer 1st half-term	Monday 13th April 2026	Friday 22nd May 2026
May Day	Monday 4th May 2026	Monday 4th May 2026
Mid-term break	Monday 25th May 2026	Friday 29th May 2026
Summer 2nd half term	Monday 1st June 2026	Tuesday 7th July 2026 at 3pm

AUTUMN TERM 2026	FROM THE MORNING OF:	UNTIL THE END OF:
Autumn 1st half-term	Monday 24th August 2026	Friday 16th October 2026
Mid-term break	Monday 19th October 2026	Friday 23rd October 2026
Autumn 2nd half-term	Monday 26th October 2026	Friday 18th December 2026 at 12.30pm

DATES FOR YOUR DIARY

SPRING TERM 2027	FROM THE MORNING OF:	UNTIL THE END OF:
Spring 1st half-term	Tuesday 5th January 2027	Friday 12th February 2027
Mid-term break	Monday 15th February 2027	Friday 19th February 2027
Spring 2nd half-term	Monday 22nd February 2027	Friday 19th March 2027
Easter Holidays	Monday 22nd March 2027	Friday 2nd April 2027

SUMMER TERM 2027	FROM THE MORNING OF:	UNTIL THE END OF:
Summer 1st half-term	Monday 5th April 2027	Friday 28th May 2027
Mid-term break	Monday 31st May 2027	Friday 4th June 2027
Summer 2nd half-term	Monday 7th June 2027	Wednesday 7th July 2027 at 3pm

Bank Holidays

Thursday 25th December 2025
Friday 26th December 2025
Thursday 1st January 2026
Friday 3rd April 2026
Monday 6th April 2026
Monday 4th May 2026
Monday 25th May 2026
Monday 31st August 2026
Friday 25th December 2026
Monday 28th December 2026
Friday 1st January 2027
Friday 26th March 2027
Monday 29th March 2027
Monday 3rd May 2027
Monday 31st May 2027

16

17

24