



@LuttHigh



LuttHigh



Lutterworth High School Academy Trust

Friday 1st November 2024



Dear Parents/ Carers

Welcome to our weekly newsletter. I hope you had a nice half-term. Happy Diwali! On Monday we will have our Diwali celebration meal which is always a huge hit with students and staff. See inside for the menu.

I'd like to pass on my congratulations to our Artist in Residence Megan Hunter who has been short-listed for the prestigious British Art Prize 2024. Her stunning portrait of her brother will be on display at the Oxo tower in London during December. Megan was a finalist in the Portrait Artist of the Year 2019 and we are delighted to have her skills and talents supporting our budding artists.



We have our Assessment and Reading Information Evening on Thursday 7th November. This is primarily aimed at our Year 7 parents but anybody is welcome to join us.

I'd like to thank our ex-students Tamsin Baynes, Alfie Dorrington and Aaron Kirk for coming along and imparting their rugby coaching skills with our students who attended the sports camp at half-term. Tamsin is now an international rugby player, Alfie plays for Lutterworth Colts and Aaron plays for Lutterworth 1XV.

Inside you will see that we will be moving our social media presence to Instagram. There are some great photos and stories to view. Please follow us to know what amazing things our students have been up to.

Have a great weekend.

Kind regards

Julian Kirby
Headteacher

NOTICEBOARD



HOW TO REPORT A CONCERN AT LUTTERWORTH HIGH SCHOOL



Tell a teacher, your tutor or go to KS3/KS4 Hubs to speak to a member of staff



Tell your parents or a friend, who can report on your behalf



Forms outside KS3 and post in the letterbox



Self report to
ks3@lutterworthhigh.co.uk
ks4@lutterworthhigh.co.uk



Speak Out button on the school website
www.lutterworthhigh.co.uk/student

Job Vacancy - Exam Invigilator

We are looking to grow our team of dedicated Invigilators. If you enjoy working with young people and you would like a role that fits around your life, then why not apply to join our team.

Find out more and apply [here](#).



Distinction Awards

Well done to the following students who achieved distinction awards this week.

Freya Abraham 7LS	Freddie Ford 8HA	Harrison Lockhart 8LM	Rhys Steele 7HB
Ella Ahearn 8LC	Amelie Gibson 9HO	Neve Loughan 7LA	Ella Sutton 10HC
Stevie Bailey 11HL	Alastair Gilbert 11FR	Mandi Madziba 8HH	Megan Sykes 7HB
Sebastian Barron 7HH	Elijah Hall 8HA	Joel Matthews 11HH	Eleanor Taken 7HB
Seth Barry 7HB	Tiz Harris 8LC	Liv Moore 9HO	Jake Tees 7LB
Jackson Bell 8HA	Hollie Hart 7LA	Ella O'Connor 9LE	Megan Thomas 9HO
Ronnie Brown 8LC	Charlotte Hartland 7HH	Sofia Oliver 9HO	Jayden Thompson 7HB
Evie Burns 7LA	Sammy Hennessy 9HO	Carla Painter 10LA	Jake Thompson 10LB
Harry Chapman 8HH	Matthew Hill 10HO	Evie Pateman 7HH	Isabella Van Allen 8HR
Lyla Clarke 8LM	Grace Jesson 11SP	Erin Peters 10HC	Oscar Van Der Willik 8LH
Aidan Connor 10HO	Carys Jones 11HJ	Tisya Rana 8LM	Alice Vigrass 8HR
Charlie Court 10LB	Chloe-May Kilbourne 7LB	Evie Roberson 10HM	Lexi Vine 8LC
Oscar Cutri 7LS	Samuel Krzeminski 8HR	Jude Rymell 8LC	Vanessa Vitolina 9HO
Alessa Deacon 7HB	Kieran Kudlicka 9HO	Mani Samrai 9LM	Noah Wedderburn 7HB
Lila Dimplebee 10LB	Vivien Kudlicka 11SP	Lucas Serban 8LH	Evelyn White 8HA
Umme-Salama Faizi 8LC	Toby Laxton 7LS	Maia Smart 8LM	Nicholas Wride 10LA
Georgiana Fisher-Richards 7HB	Conor Lenton 7LA	Antonio Soare 8HA	Jake Yip 7LB

House Points

	Churchill	Cunningham	Montgomery	Tedder
KS3	Samuel Krzeminski 8HR (50)	Harry Daffern 7LB (49)	Antonio Soare 8HA (51) Oliver Lewis 8LC (51)	Noah Wedderburn 7HB (63)
KS4	Chris Burnett 10HC (61)	Jude Carter 10HO (77)	Evie Roberson 10HM (78)	Charlie Court 10LB (88) Sophie Hammond 10HM (88)

NOTICEBOARD



ASSESSMENT AND READING INFORMATION EVENING

THURSDAY 7TH NOVEMBER 24
5.30-6.30PM

An opportunity for parents to understand the Lutterworth High School assessment system for both KS3 and KS4.

- Find out about the 1-9 GCSE grading system.

- Know how to identify if your son or daughter is 'on track'.

- Learn about how the school supports your child's development with the explicit teaching of Reading, Oracy and Writing (ROW)

W www.lutterworthhigh.co.uk
T 01455 552710

E admin@lutterworthhigh.co.uk

FOR PARENTS OF YEAR 7



Diwali Celebration 2024

Monday 4th November 2024

Mains

- Chicken dum biryani
- Paneer dum biryani
- Vegetable samosa
- Poppadums & mango chutney

Hot Deli

Chicken tikka, flatbread, salad & mint dressing

Grab & Go

Chicken tikka flatbread, salad & mint dressing

Desserts

Selections of homemade cakes/ cookies

NOTICEBOARD

Hot Choc Friday

Well done to the following students who have achieved a Hot Choc Friday this week.



FRENCH SPELLING BEE



Calling all Year 7s!

Join in this year's French Spelling Bee Competition!

Thursday lunchtimes, Room D2 at 12.30pm

Start date: Thursday 7th November 2024

See Miss Carletti for a lunch pass if necessary.

Certificate for every entrant

Spot prizes on the way!

Amazon vouchers for the winner and runners-up!

Prizes awarded on Thursday 12th December!

You have to join in from the first week.

Sign up on SOCS

Give it a go! 😊





STAY TUNED

COMING
SOON

FOLLOW US





Poppy Merchandise For Sale at Charity Corner

Every lunchtime from Friday 1 November to Monday 11 November 2024

Zip pulls, snap bands, bracelets and traditional paper poppies available for a suggested donation of £1 each.

Funds raised will be donated to the Royal British Legion, who support service personnel in the Royal Navy, British Army, Royal Air Force; veterans; and their families.



Registered charity number: 219279

rbl.org.uk



ROYAL BRITISH LEGION

Please sign up on SOCS by Monday
4th November by 3.00pm if you
would like to take part.

THE LHS DANCE-A-THON



RAISING FUNDS FOR CHILDREN IN NEED

WEDNESDAY 13TH
NOVEMBER

9.00AM-3.00PM

SIGN UP ON SOCS



MINIMUM
£10
SPONSOR FEE
PRIZE FOR MOST
MONEY RAISED



Tedder Pumpkin Carving Competition

We had some fantastic entries for our annual Tedder pumpkin carving competition this year. Prizes will be awarded in next week's assemblies.

The fantastically creative pumpkin (pictured left) by Sophie Gregory, was the pick of the crop and was voted as the most popular by the school community.

We already can't wait for next year!

Mr Nutt
Head of Student Voice and Transition





Humanities Photograph Competition

Send your entries to Mr Nutt or Mr Allen by Friday 15th November

Textiles Club



Together
Against
Cancer

Students who take part in the co-curricular Textile art club with Miss Spalding were involved in raising money for the Leicester based charity Together Against Cancer. They made microwavable hand warmers, hair scrunchies and textile broaches that were sold at a craft fair in Leicester on Saturday 26th October. Their contributions helped to raise over £200 for the charity.

Organisers of the event and a representative from Together Against Cancer praised the students involved and said of their contributions 'Your crafts looked amazing and really added to the stall.' '....I feel quite emotional. You have such kind hearts.'



6 MARK

MORNINGS

Y11 Science revision

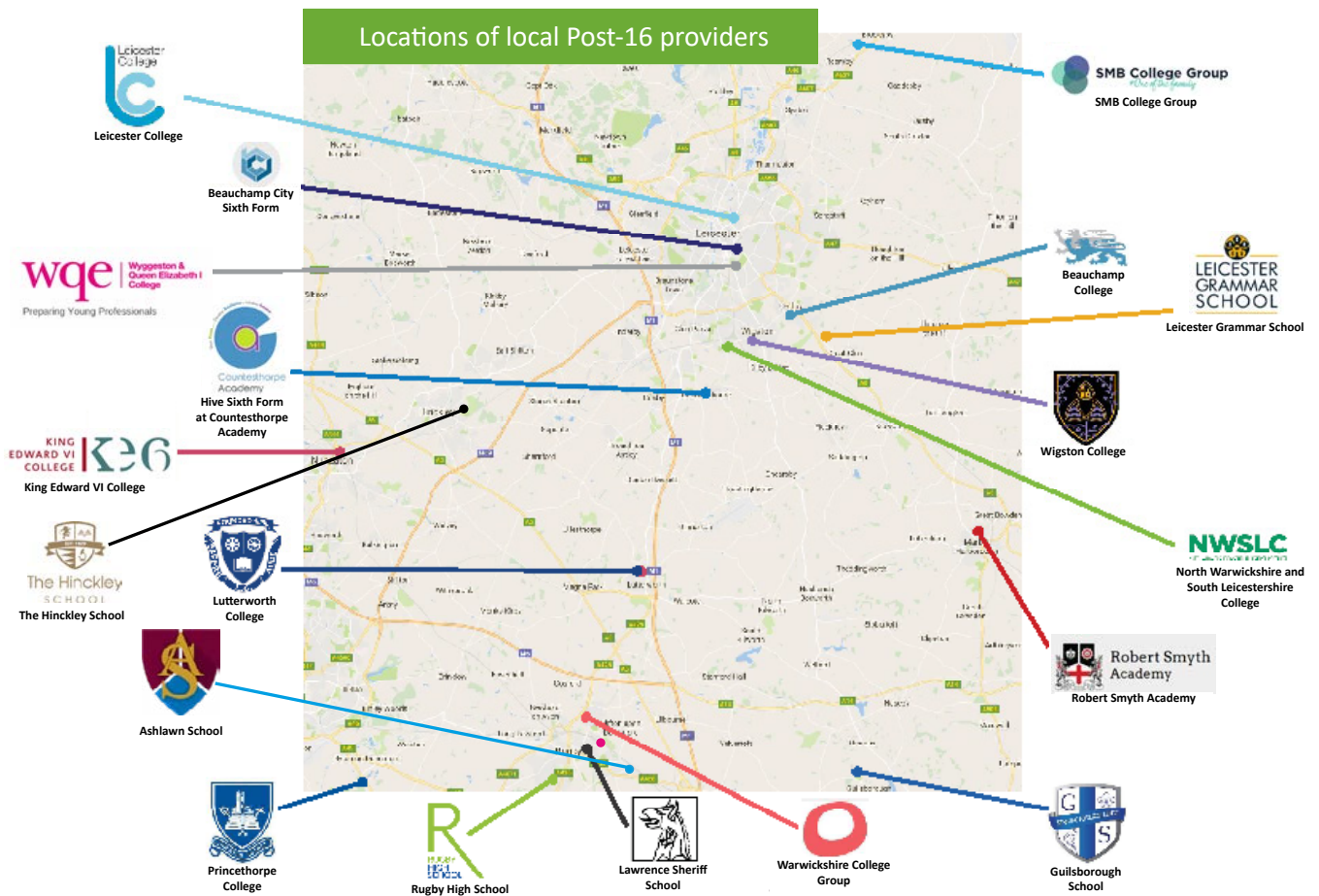
→ Tues- **Biology**

→ Wed- **Chemistry**

→ Thurs- **Physics**

8:15 Room 16





Post-16 Providers - Open Days/Evenings

Beauchamp College	Saturday 9th November 2024 9am-3pm
Beauchamp City Sixth Form	Open Day - Saturday 2nd November. 10am-2pm TBC. <i>Check website closer to the time to book tickets.</i>
SMB College Group	Click here to view the various open days at the different campuses
Guilsborough Academy	Thursday 7th November 2024 6-8.00pm
Hive Sixth Form at Countesthorpe Academy	Thursday 7th November 2024
The Hinckley School	Wednesday 6th November 2024
King Edward VI	Thursday 5th December 2024 from 5.30pm – 8pm. Registrations will go live shortly.
Leicester College	Saturday 16th November 2024, 10am – 1pm @ All three main campuses
North Warwickshire and South Leicestershire College	Page will be updated here
Robert Smyth Academy	Open Morning - Wednesday 20th November 9am Open Evening - Wednesday 13th November 6pm <i>Booking will be available shortly via the website.</i>
Rugby High School	5:30pm and 8:30pm on 07/11/2024
Wigston College	Wednesday 6th November 2024. TICKETS AVAILABLE SOON
Wyggeston and QE1 College	Saturday 2nd November 2024, 9:00am – 3:00pm

Revision Block 1

Monday 28th October to Friday 22nd November 2024

	Monday	Tuesday	Wednesday	Thursday	Friday
Before school 8.15 - 8.30am	English Language Question	Biology - Rm16 6 mark questions	Chemistry - Rm16 6 mark questions	Physics - Rm16 6 mark questions	English Language Question
Lunchtime 12.30 - 12.50pm			PE - D6 1-1.15pm		DT - D5 12.45pm
After School 3.15 – 4pm	Maths F - Rm5 H - Rm1	DT - NEA - D5 GSCE Art - D2 - Drop in Business - D3 Music NEA - Rm18 Compositions	English Language Paper 1 & 2 questions/writing	History - Rm11 Geography - Rm7 & 8 RE - Rm10 GSCE Art - D2 - Drop in *Science F - Rm17	Business - D3
After School 4pm – 4.45pm	French - Rm15 Spanish - Rm14	Dance - Studio	Food - Rm17	*Science H - LHUB	

*Science F & H	Week 1	Week 2	Week 3	Week 4
	31/10/2024	7/11/2024	14/11/2024	21/11/2024
15.15-16.00 - Rm 17	Biology F	Chemistry F	Physics F	RP Bio/Chem/Phys F
16.00 - 16.45 - LHUB	Biology H	Chemistry H	Physics H	RP Bio/Chem/Phys H



Y11 Mock Exams Nov - Dec 2024

ART MOCK
Wednesday 20th November (Class 11F)
Friday 22nd November (Class 11D)

Monday 18 th November	Tuesday 19 th November	Thursday 21st November
Science Walking Talking Mock Period 3-4	English Walking Talking Mock Period 3 - 4	Maths Walking Talking Mock Period 1-2
History Walking Talking Mock Period 5-6		Geography Walking Talking Mock Period 5-6

	Monday 25 th November	Tuesday 26 th November	Wednesday 27 th November	Thursday 28 th November	Friday 29 th November
P1 –3	English Language Paper 1 1hr 45m	History Paper 1 2hr	2hrs Science - BIOLOGY Separate science 1hr 45m Combined 1hr 15m	Science – PHYSICS Separate science 1hr 45m Combined 1hr 15m	English Language Paper 2 1hr 45m
Break	Periods 1,2,3 then break				
P4					
Lunch					
P5-6	Maths Non-Calculator Paper 1hr 30m	Geography Paper 1 1hr 30m	Enterprise & Marketing 1hr 15m Dance 1hr 30m	Maths Calculator Paper 1hr 30m	French/Spanish Writing Foundation 1hr Higher 1hr 15m

Y11 Nov-Dec Mock Exams 2024



	Monday 2 nd December	Tuesday 3 rd December	Wednesday 4 th December	Thursday 5 th December	Friday 6 th December
P1 –3	RE 1hr 45m Statistics 1hr 10m	Design Technology 2hr Food and Nutrition 1hr 45m Drama 1hr 45m	Science – CHEMISTRY Separate science 1hr 45m Combined 1hr 15m	French Reading/Listening Foundation R=45 mins / L=35m Higher R=1hr / L=45m	Business 1hr 45m Catch up session
Break	Periods 1,2,3 then break				
P4					
Lunch	Normal lunch				
P5-6 1:30pm start	Geography Paper 2 1hr	History Paper 2 1hr	Creative imedia 1hr 30m Computer Science 1hr 30m PE 1 hr --- Music 1hr 15m	Spanish Reading/Listening Foundation R=45m / L=35m Higher R=1hr / L=45m	Catch up session

French/ Spanish speaking mock xams	GCSE English Language speaking assessments	DT NEA	Music Composition NEA
Week Commencing 9 th December	Week Commencing 9 th December	Week Commencing 16 th December	Week Commencing 16 th December

SPORTS HIGHLIGHTS

Football

Year 11 boys football played against Brooke House this week. Brooke House are a football academy school with players from all over the globe coming to play football for them. We played excellently and won the game 4-3 - the scoreline not reflecting our dominance. Goals from Liam, Harry, Hayden and Jack. Well played everyone!

MONDAY	TUESDAY	WEDNESDAY	THURSDAY	FRIDAY
 AFTER SCHOOL 15:00-16:30				 THE EMERALD WAY
Boys Rugby Yr.7 (MHO)	Boys Rugby Yr.10+11 (JJ)	Basketball Yr.7 (MHO)	Basketball Yr.8 (AMA)	Dance Club Yr.7-9 (MCU)
Boys Rugby Yr.8 + 9 (TWH)	Netball Yr.9+10+11 (MCU + ZOD)		Girls Rugby All Years (TWH)	
Netball Yr.7+8 (ZTU + STO)	Basketball Yr.11 (AMA)		Games Club Invite Only (STO)	
		Mixed XC Yr.7-11 (MNA)		
		Lunchtime Boccia All Years (STO)		

ACTIVITY OVERVIEW - TERM 2

Days	Lunch 12.30-1.15pm	After School 3.00pm 3.00-4.00pm/4.15pm/4.30pm
Monday	12:30-13:15 Buddy Club 12:30-13:15 Christian Union 12:30-13:15 LHS Podcast 12:30-13:15 Map Club	15:00-16:00 Silver DofE 15:00-16:15 Craft Club 15:00-16:30 Grease - Backstage Crew 15:00-16:30 Netball 7 15:00-16:30 Netball 8 15:00-16:30 Rugby 7 15:00-16:30 Rugby 8 15:00-16:30 Rugby 9 15:10-16:00 Science Club 7 15:15-16:30 School Production (Grease)
Tuesday	12:30-13:15 Buddy Club 12:30-13:15 French Cinema Club	15:00-16:00 Y8 Jewellery Club 15:00-16:15 Basketball 11 15:00-16:15 KS3 Art Club 15:00-16:15 KS4 GCSE Art Catch Up 15:00-16:30 Netball 10 15:00-16:30 Netball 11 15:00-16:30 Netball 9 15:00-16:30 Rugby KS4 16:00-16:45 Dance
Wednesday	12:30-13:10 Boccia 12:30-13:15 Buddy Club 12:30-13:15 Spanish Film Club	15:00-16:00 Bronze DofE 15:00-16:00 Further Maths 15:00-16:15 Basketball 7 15:00-16:30 Grease - Backstage Crew 15:05-16:00 STEM Club 15:10-16:15 Advanced Textiles 15:15-16:30 School Production (Grease) 15:15-16:35 Cross Country Club
Thursday	12:30-13:10 Pride Club 12:30-13:15 Buddy Club 12:40-13:15 Choir/Singing Club	15:00-16:15 Basketball 8 15:00-16:15 Games Club 15:00-16:15 Young Artists 15:00-16:30 Managing Money For Young People
Friday	12:30-13:15 Buddy Club 13:00-15:00 Music Madness	15:15-16:00 Business Studies Friday Afterschool 15:15-16:00 Dance Club



THE
EMERALD
WAY



eServices

KEEPING US CONNECTED

EduLink

The EduLink App provides a convenient and accessible way for us to communicate with parents on some of the main aspects of daily school life.

It's easy to use and is accessible from a smart phone, tablet or PC. You can use the app to report an absence easily and also book appointments for your child's Parents' Evening.

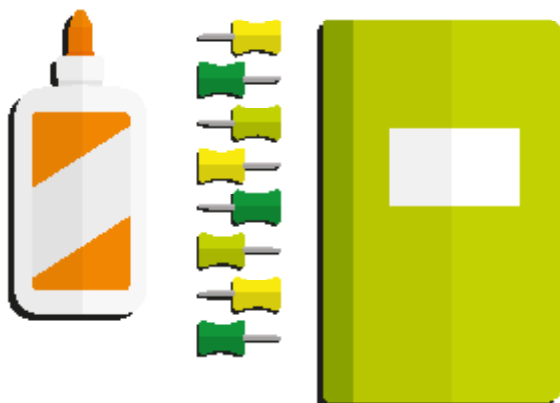
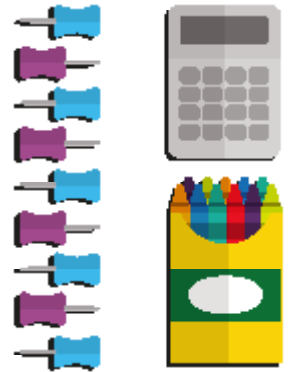
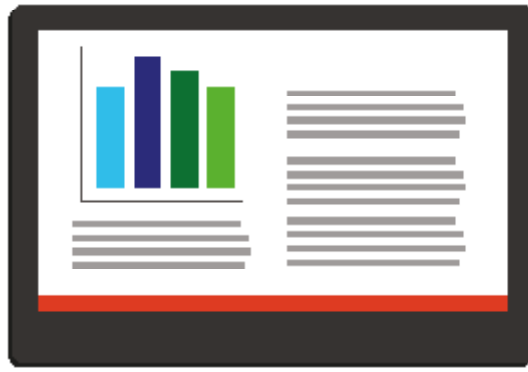
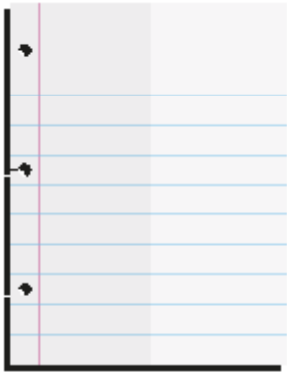
If you haven't already been issued with login details, please contact the EduLink team on the below email address edulinkapp@lutterworthhigh.co.uk.

NEED HELP?

If you have any queries or need IT assistance, do not hesitate to email eservices@lutterworthhigh.co.uk



OFFICE 365 - STUDENT ADVANTAGE & TEAMS



Stock up for academic success with free Office.

Students get a complete version of the latest Microsoft Office for free to use for as long as they're students!

Visit our the website and go to Menu - Students - Student Zone

Penalty Notices for unauthorised absences: What you need to know about the changes.

With the introduction of the new National Framework for Penalty Notices, the following changes will come into force for unauthorised absences that occur after 19th August 2024.

5 Consecutive Days of Term Time Leave.

Penalty Notice fines will be issued for term time leave of 5 or more consecutive days, and for fewer days where this has happened before.

10 Sessions of Unauthorised Absence in a 10-week period.

Penalty Notice fines will be considered when there have been 10 sessions of absence in a 10-week period.

Per Parent, Per Child

Penalty Notice fines will be issued to each parent, for each child who was absent.

For example: 3 siblings absent for term time leave will result in each parent receiving 3 separate fines.

First Offence

The first time a Penalty Notice is issued for Term Time Leave or irregular attendance the amount will be:

£160 per parent, per child when paid within 28 days.

Reduced to £80 per parent, per child if paid within 21 days.

Second Offence (within 3 years)

The second time a Penalty Notice is issued for Term Time Leave or irregular attendance the amount will be:

£160 per parent, per child when paid within 28 days.

(No option to pay at £80 level)

Third offence and Any Further Offences (within 3 years)

The third time an offence is committed for Term Time Leave or irregular attendance a Penalty Notice will not be issued. The case will proceed to the Magistrates' court.

Magistrate's fines can be up to £2,500 per parent, per child.



Please consult your school's attendance policy and speak with your school if you are thinking of taking your child out of school during term-time. It is likely you will need to make a written request to take your child out of school and any leave of absence will need to be agreed by your Headteacher before it is taken.

COMMUNITY NOTICES

UNDERSTANDING CHILDHOOD TRAUMA: A THERAPEUTIC APPROACH

FOR PARENTS/ GUARDIANS/ ADOPTERS/ FOSTER
CARERS/ SGO WHOSE CHILD HAS EXPERIENCED TRAUMA

A 6 WEEK COURSE IN A FRIENDLY, SAFE &
NON-JUDGEMENTAL SPACE

WE WILL COVER:

- CHILDHOOD TRAUMA
- BEHAVIOURS
- VICARIOUS/SECONDARY TRAUMA
- WHAT SURVIVAL LOOKS LIKE AT HOME
- WHAT IS THERAPEUTIC PARENTING
- PACE MODEL
- DISTRACTION TECHNIQUES
- DE-ESCALATION STRATEGIES & MORE



SELF REFERRAL / PROFESSIONAL REFERRAL THROUGH MARF- JUST PUT THE GROUP
NAME - [LINK HERE FOR MARF](#)

FACILITATORS- JENNY BROWN & KAREN
SQUIRES

COMMUNITY NOTICES

SIEMENS

Ready to create
your **own journey?**

Apprenticeship
Insight Evenings

- Goole, East Riding of Yorkshire - Monday 21st October
- Northampton, Northamptonshire - Wednesday 23rd October
- Chippenham, Wiltshire - Monday 28th October
- Hornsey, London - Wednesday 30th October

Create a better
#TomorrowWithUs



We have an exciting opportunity for students in School Years 11 or 13, or in their final year of college!

Next week, on Wednesday 23rd October we are hosting an Apprenticeship Insight Evening in Northampton for students interested in an apprenticeship with Siemens Mobility for 2025, for roles across the midlands.

Running from 5pm to 9pm, students can be accompanied by a parent to explore what an apprenticeship starting Summer 2025 would look like for them.

Students interested in signing up can visit www.siemens.co.uk/insight.

Please note, spaces are allocated on a first-come-first-serve basis.

If you (or students/parents) have any questions, please feel free to reach out to us at mobility.stem.gb@siemens.com.

COMMUNITY NOTICES



OCT/NOV TIMETABLE

Talks are delivered online via zoom 7pm to 9pm £24 each

If you can't make the date or time all paid for talks are recorded and available for 48 hours afterwards

Book online at facefamilyadvice.co.uk

FREE SESSIONS	
Introduction to Facing Defiance Decreasing Depression	24 OCT 25 NOV
Anxiety Explained	17 OCT
Understanding Anger	21 OCT
Autism: Improving Communication	28 OCT
Introduction to OCD	29 OCT
Improving Family Communication	4 NOV
Anxiety-Based School Avoidance	12 NOV
Anxiety Explained	14 NOV
Understanding Anger	18 NOV
Drug Awareness for Parents	19 NOV
Supporting Healthy Screen Use	21 NOV
What is ACT?	26 NOV
Understanding Addictive Behaviour	28 NOV

COMMUNITY NOTICES



November 2024 Newsletter

If you can't make the date or time
all paid for talks are recorded and available for 48 hours afterwards

Monday
25th Nov
19:00 - 20:00
FREE



FREE SESSION

Decreasing Depression

A range of steps that can help to reduce the crippling impact of depression.

Thursday
7th Nov
19:00 - 21:00
£24



Supporting a Child with ADHD

Challenging the stereotypes and giving practical interventions. Clear explanation of the condition in all its forms and extremely useful advice.

Tuesday
12th Nov
19:00 - 21:00
£24



Anxiety-Based School Avoidance

Understanding and supporting children who are anxious about school. Steps you can take to help them back into the classroom.

Monday
18th Nov
19:00 - 21:00
£24



Understanding Anger: Yours and Theirs!

What is anger? Why do we have it?
How do we manage it in ourselves and in our children?

Thursday
21st Nov
19:00 - 21:00
£24



Supporting Healthy Screen Use

Clarifying the difference between healthy screen use and unhealthy screen use. Addressing concerns about blue light and sedentary behaviour.

facefamilyadvice.co.uk

info@facefamilyadvice.co.uk

COMMUNITY NOTICES

N W S L C O P E N E V E N T S

NWSLC

NORTH WARWICKSHIRE AND SOUTH LEICESTERSHIRE COLLEGE

OPEN EVENTS

Wednesday 16th October

Hinckley and Wigston Campuses | 4pm – 7pm

Thursday 17th October

Nuneaton and Harrowbrook Campuses
4pm – 7pm

MTI Campus | 5pm – 7pm

Saturday 30th November

Nuneaton, Hinckley, Harrowbrook,
Wigston and MTI Campuses
9.30am – 12 noon

Wednesday 5th February

Wigston Campus and Apprenticeship
Evening at Harrowbrook Campus
4pm – 7pm

Thursday 6th February

Nuneaton Campus | 4pm – 7pm
MTI Campus Employer Evening
5pm – 7pm

Wednesday 25th June

Wigston and Hinckley
Campuses | 4pm – 7pm

Thursday 26th June

Nuneaton and Harrowbrook
Campuses | 4pm – 7pm
MTI Campus | 5pm – 7pm



This year we will also be hosting **Campus Experience Days**
for students who have applied to NWSLC

Saturday 1st March 2025 from 9.30am – 12 noon at all campuses

Thursday 26th June 2025 (times to be confirmed) at all campuses

www.nwslc.ac.uk/openevents 0330 058 3000

COMMUNITY NOTICES



Change their world...

We have 67 babies and children awaiting adoption...

If you would like to start or grow your family through adoption, we'd love to help.
Take the first step by booking on to our 'You Can Adopt Information Event...

Thursday, 17th October at 12.30pm
Wednesday, 6th November at 6.30pm
Thursday, 19th November at 12.30pm
Wednesday 4th December at 6.30pm

Book your place here,
familyadoptionlinks.org.uk

**FAMILY
ADOPTION
LINKS**

Leicestershire

DATES FOR YOUR DIARY

AUGUST TERM 2024 FROM THE MORNING OF: UNTIL THE END OF:

Autumn 1st half term	Tuesday 27th August 2024	Friday 18th October 2024
Mid-term break	Monday 21st October 2024	Friday 25th October 2024
Autumn 2nd half term	Monday 28th October 2024	Friday 20th December 2024 at 12.30pm

SPRING TERM 2025 FROM THE MORNING OF: UNTIL THE END OF:

Spring 1st half-term	Tuesday 7th January 2025	Friday 14th February 2025
Mid-term break	Monday 17th February 2025	Friday 21st February 2025
Spring 2nd half-term	Monday 24th February 2025	Friday 11th April 2025

SUMMER TERM 2025 FROM THE MORNING OF: UNTIL THE END OF:

Summer 1st half-term	Monday 28th April 2025	Friday 23rd May 2025
May Day	Monday 5th May 2025	Monday 5th May 2025
Mid-term break	Monday 26th May 2025	Friday 30th May 2025
Summer 2nd half-term	Monday 2nd June 2025	Wednesday 9th July 2025 at 12.30pm