



@LuttHigh



LuttHigh



Lutterworth High School Academy Trust

Friday 16th February 2024



Dear Parents/ Carers

Welcome to our final newsletter of this half-term. It has been a week of celebration this week as we have celebrated students achievements over this half-term . Well done to everyone nominated and please look inside for photos.

Thank you to all parents and students who attended our Year 9 Options Evening. I hope you found the event useful. It is an exciting time for the students as they pick their options but it can also be challenging to make the decisions. If you would like any further support please do not hesitate to contact us on [options@lutterworthhigh.co.uk](mailto:options@lutterworthhigh.co.uk) .

Our next save the date is the Plan, Prepare, Achieve Evening for Year 11 parents and students. This is on Thursday 7th March at 6.00pm. I strongly recommend parents attend and we have had excellent feedback from parents in previous years. Every family will receive a folder packed with useful advice and guidance.

We are looking to recruit and train the next generation of mathematics teachers. We are contacting all of our alumni and families to see who would like to train and teach in our mathematics department. Further information is inside.

Have a lovely weekend.

Yours faithfully

Julian Kirby  
Headteacher



# NOTICEBOARD

## SCOPAY Alerts

There has been an upgrade on SCOPAY which may have resulted in parent alerts being turned off. To switch back on, please follow these instructions.

SCOPAY Alerts Set up alerts so you can keep on top of your child's catering account.

- Log in to SCOPAY:- <https://www.scopay.com>
- Go to Menu
- Click on Alerts
- Click on "Click here to configure the alerts you receive"
- Tick the boxes to receive alerts and email
- <https://www.scopay.com/account/AlertConfiguration>

**HOW TO REPORT A CONCERN AT LUTTERWORTH HIGH SCHOOL**

- Tell a teacher, your tutor or go to KS3/KS4 Hubs to speak to a member of staff
- Tell your parents or a friend, who can report on your behalf
- Self report to [ks3@lutterworthhigh.co.uk](mailto:ks3@lutterworthhigh.co.uk) or [ks4@lutterworthhigh.co.uk](mailto:ks4@lutterworthhigh.co.uk)
- Speak Out button on the school website [www.lutterworthhigh.co.uk/student](http://www.lutterworthhigh.co.uk/student)

## House Points

KS3	Isaac Cottom 8LM (40)	Asma Faizi 8LM (45)	Freddie Cooke 9LA (34)	Milena Lopata 9HC (46)
KS4	Marc Hawkins 11HH (35)	Sophie Underwood 11HW (47)	Sophie Donovan 11LSD (46)	Elizabeth Fletcher 10HE (48)

## Student Achievement

The student pictured right has won his first Under 14's LTA title at Carisbrooke this weekend. He knocked out the No1 and No3 seed players on his way to the final. He came from a set down in the quarter-final, semi-final and even the final to win all matches, two sets to one. When his opponent's racket broke after only one game of the final, he had no hesitation in lending him his spare racket in a fine show of sportsmanship. He said "I wanted to win my first title fair and square and would not have wanted to win due to my opponent not being able to play on. We both wanted to play on so it was an easy decision really!



## Student Achievement

Lutterworth Rugby Football Club - Girls U14's Rugby Team Game 4/2/24

Lutterworth High School students Jessica Sykes, Molly Baker, Ella Robinson, Evie Atkinson, Ayla Melton, Laylah Egginton and Olivia Moore, along with team mates Connie, Izzy, and Amelia gave an outstanding performance in their latest game against Melton and Oakham. The Lutterworth U14's team running out the winners with a full-time score of 80:21.

Melton and Oakham gave a brilliant performance and fought hard right to the end. However, the Lutterworth team were ultimately the victors executing some outstanding plays. Everyone on the pitch contributed to a fantastic game. The girls worked as a team supporting each other, going from strength to strength, building on each other's skills. This resulted in a game that was thrilling to watch.

We were also privileged to have two players from the Leicester Tigers Women's Team, Tahlia Brody and Keira Mae Sagapolu Sanele. They were full of praise for the girls and very complimentary about the teams playing. Tahlia and Keria Mae are looking to come back to LRFC to help out in coaching sessions along with other Tigers players, who are extremely supportive of grass root players.

At LRFC we are very fortunate to have excellent coaches along with a number of very dedicated officials who give of their time to help run the club. LRFC have a number of different teams and anyone who wants to come and try their hand at Rugby is very welcome. There is no pressure, just a great opportunity to try something different, meet new people, build on existing skills or learn new ones and have fun.

## Attendance Awards

Well done to the students below who have received attendance awards. Each half term, we award students for 100% Attendance, perseverance and most improved attendance. Well done to Harley Barrs for winning the perseverance award.





## DO YOU HAVE A PASSION FOR MATHEMATICS?

### DO YOU THINK YOU COULD INSPIRE THE NEXT GENERATION OF MATHEMATICIANS?

We are looking to support an inspirational candidate in securing **PGCE** and **QTS** within mathematics, here at Lutterworth High School.

Through the School Direct (Salaried) route we can offer you first class training and support within a highly successful mathematics department and partner Teaching School Hub. During your year training, most of the time will be in school, working with experienced teachers to develop your understanding of effective teaching practice. You will have the opportunity to teach across the 11-16 age range and develop the outcomes of students from all backgrounds.

Part of your time will also be spent at the Teaching School Hub, developing your theoretical knowledge of evidence-based teaching. Through this, you will work towards completing your PGCE and gaining masters credits.

Unlike other Initial Teacher Training routes, you will be paid a salary during your training year and have access to exceptional in school professional development opportunities, in addition to the ones provided at the Teaching School Hub.

#### **To be considered, you will need:**

A degree in any subject on at least 2:2 grade (ideally in mathematics or a related subject, such as engineering).

A strong A -level grade in Mathematics.

GCSE mathematics and English at grade C (4) or above.

**To find out more please contact [admin@lutterworthhigh.co.uk](mailto:admin@lutterworthhigh.co.uk) to arrange an informal discussion.**



# NOTICEBOARD

## HOT CHOC FRIDAY

Well done to the following students who have achieved a Hot Choc Friday award this week.



## Surprise Attendance Breakfast

10HE received a surprise breakfast for the best tutor group attendance this February half-term.





# NOTICEBOARD

## WORLD BOOK DAY 7TH MARCH 2024

Bookish costume competition  
Bookmark design competition  
Bookish Bake Sale  
Big Book Swap  
and more!

1  
MONTH  
TO GO

More details to come!

THE **LEARNING HUB** LHS

## ARTS IN THE HALL

Complimentary ticket  
with donations to the Music  
Department gratefully received



Wednesday 20th March 2024  
6.00-7.00pm



### PLAN, PREPARE, ACHIEVE YEAR 11 REVISION EVENING

THURSDAY 7TH MARCH  
6.00PM-8.00PM

Arrival from 5.45pm

Students will receive a personalised pack which will include relevant revision information as well as an exam timetable and subject revision programmes.

There will be two talks by the headteacher, one at 6.00pm and the other at 6.45pm. These talks are the same, so you only need attend one.

W [www.lutterworthhigh.co.uk](http://www.lutterworthhigh.co.uk)  
T 01455 552710



Ofsted  
Outstanding  
2011|2012



# AWARDS SPECIAL





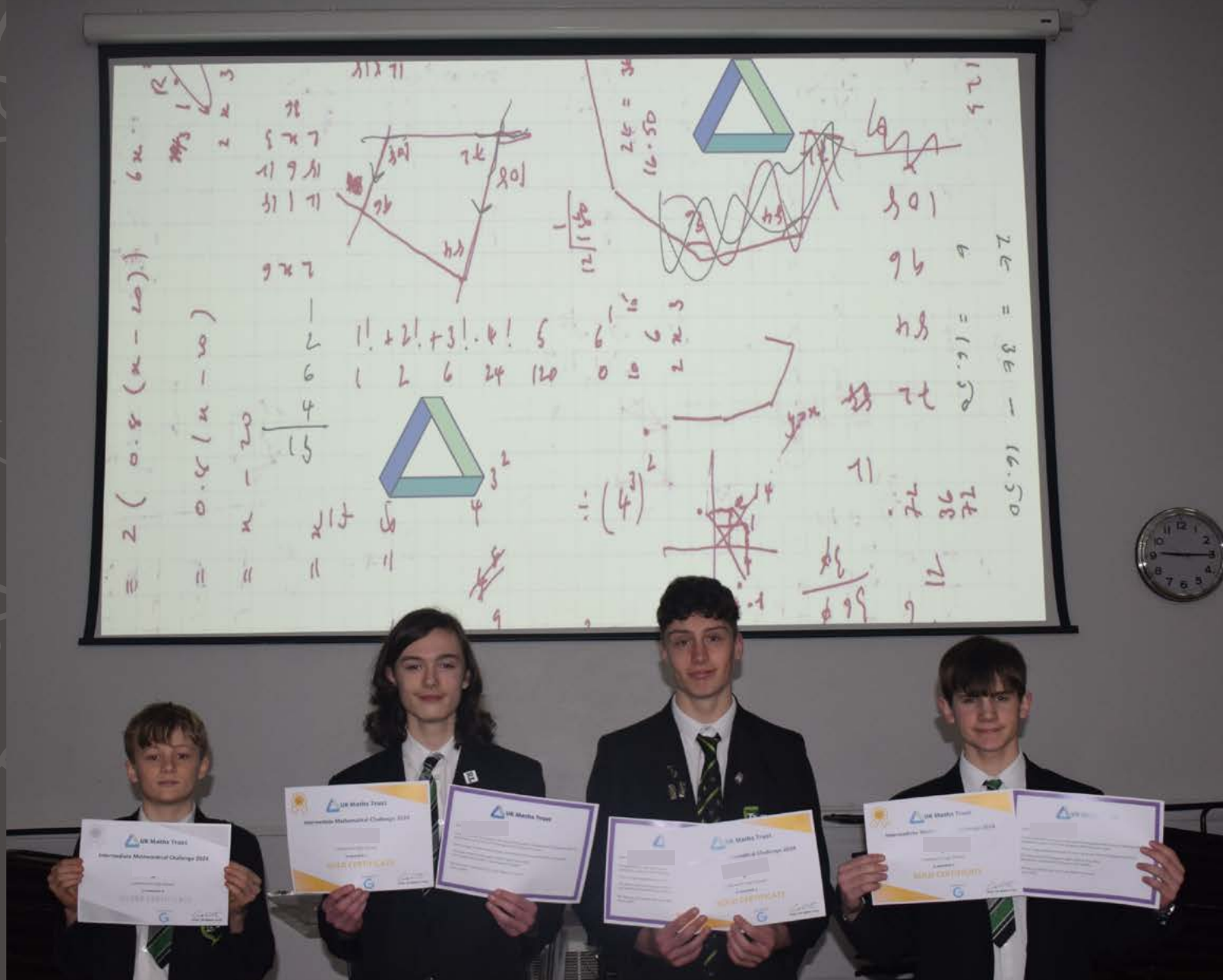
# THE EMERALD WAY





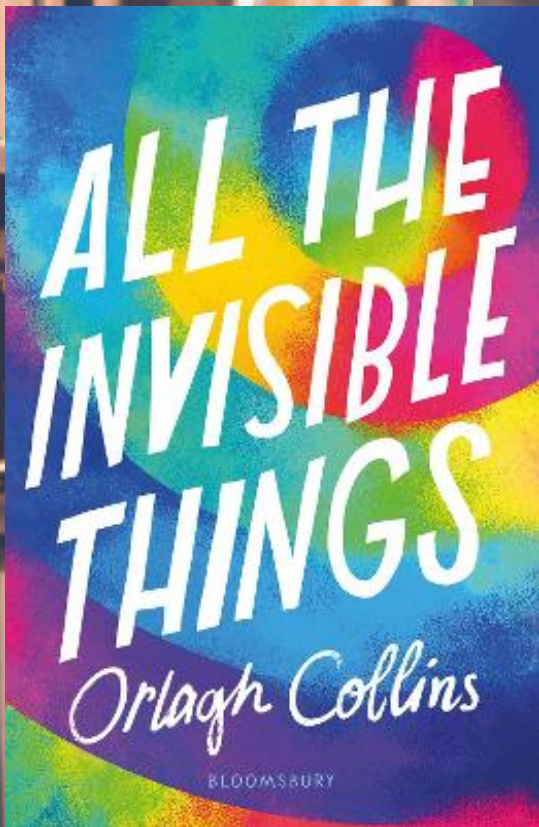
# Intermediate Mathematics Challenge

Huge congratulations to the students who took part in the Maths Challenge, with three of our students being invited to the Pink Kangaroo international challenge. The next Maths Challenge is the Junior Maths Challenge for years 7 and 8 on Thursday 25th of April.





# Book of the Month February



## All the Invisible Things by Orlagh Collins

This authentic YA page-turner about making sense of the whirlwind that is growing-up fizzes with heart, humanity and honest true-to-life experiences.

For the past few years Vetty, her dad and little sister Ariel have been living with her aunt, trying to get themselves back on track after the death of her mum. On top of this, Vetty is struggling with her sexuality, trying to make sense of the fact that she's attracted to boys and girls.

You can find other LGBTQ+ books in the Learning Hub by looking out for the Pride Heart stickers!



## LGBT+ HISTORY MONTH



Look out for the Pride heart for LGBT+ books.



George Mears  
Year 10  
8/10



"Very informative and fun."

## Winter Wonderland

### Poetry competition Winner!

#### Winter

When Winter makes his entrance, the sky is quick to turn to dark, the air rushes to cool.

Weather, for all his might, is conquered, falling in fleets and flurries of snow.

The land watches as the soft blanket falls, as the trees turn bare, and the barn owl perches.

Dormice, fragile and timid, buried in a gentle slumber where the season cannot find them.

A winter's night is quiet, fields lying fallow, the distant scream of a lone fox, there is nothing for miles.

And one morn, the shying sunlight will creep through the trees, and Winter will march back home once more.

Charlotte Allen, 10LM



## HOUSE READING CHALLENGE



Earn House Points by borrowing and reading books!

1. Borrow a book
2. Return it with a Rapid Review slip
3. Get a token for your house

**CUNNINGHAM IS CURRENTLY IN THE LEAD**



Each half-term the house with the most tokens will win 100 house points and one lucky reader will win a prize.

2nd place = 75 points

3rd place = 50 points

4th place = 25 points



# DISTINCTION AWARDS

Alex Holyoak 8LE  
Herbie Hopkins 8HO  
Ziggy Hubbard 9HM  
Chloe Hurst 7LM  
Yasmin Ismail 8HG  
Jovina Joshi 7HH  
Emily Keyworth 7HA  
Izzy Kirby 11HH  
Kieran Kudlicka 8HO  
Indi Lockwood 9HM  
Milena Lopata 9HC  
Violet Mackenzie 11LFD  
Mariana Magalhaes 8LE  
Oskar Mankert 8LM  
Luca Marston 7HH  
Lucy McClements 7HA  
George Mears 10HL  
Julia Melville 10LT  
Toby Mitford 9HM  
Jacob Murty 7HA  
Zahraa Nasrallah 8LM  
Rosa Newbury 8HS  
Ben Nicholls 8LM  
Isabella Nicoll 7HR  
Klaudia Ochal 8LM  
Nancy Owen 9LA  
Iris Pateman 9HC  
Kacie Peters 8HG  
Mimi Peterson 9HO  
Brendan Pollock 10HB  
Phoebe Pugh 7HA  
James Quinn 8HG  
Tisya Rana 7LM  
Toby Read 8HS  
Breanna Reece 9HC  
Elliot Retmanski 9LA  
Sophia Rochelle 11HJ  
Jack Rose 10LM  
Mani Samrai 8LM  
Lani Sandford-Williamson 7LC  
Megan Sands 11HL  
Jake Schofield 9HO  
Charlie Simons 8LE  
Evie Simpkin 7HR  
Dion Smart 10LK  
Swaley Storey 7HH  
Megan Thomas 8HO  
Daniel Topham 8HS  
Kaylen Townsend 10HE  
Isabella Van Allen 7HR  
Ezequiel Vieira 7HH  
Jayden Waller 8LM  
Jessica Warden 7HH  
Henry Wharton 8LE  
Mikey Whistance 8LM  
Poppy White 7HH  
Harrison Wicks 9LB  
George Wilson 8LM  
Oliver Withers 11HW  
Thomas Wride 9LB  
Beau Wright 8HO  
Lilia Young 10LT

# WOW WORK - SPANISH

Year 10 Spanish FAR work this term. Absolutely blown away by the understanding of the success criteria and the higher level structures being used. Very happy teacher. Mrs Jarmulewski

**Nombre:** \_\_\_\_\_

Describe tus pasatiempos en un blog.

Menciona:

- ¿Cuáles son las ventajas y desventajas de tu colegio?
- Un día memorable que tuviste en el colegio.

Escribe 150 palabras en español. Contesta a cada parte de la pregunta.

Una ventaja de mi colegio es que los profesores son muy inspiradores. Por ejemplo mi profesor de matemáticas es normalmente explica cosas bien y por lo tanto <sup>en mi opinión es</sup> encuentra al profesor bastante interesante. Sin embargo nunca corrige los cuadernos así que <sup>son un poco</sup> perezoso. <sup>creo</sup> Pienso que el uniforme de mi colegio es buena <sup>llevar</sup> <sup>falda</sup> <sup>blusa</sup> dado que se debe una <sup>blusa</sup> <sup>falda</sup> y una <sup>blusa</sup> <sup>falda</sup> blanca. Si pudiera <sup>llevaría</sup> <sup>mi propia ropa</sup>. Por desgracia <sup>unos</sup> alumnos golpear las otras lo que no es aceptable. Pienso que la disciplina es mala. Lo malo es mi colegio es solo chicas y preferiría trabajar con chicos. Aunque es verdad que estudio mejor sin la distracción de los chicos. lo mejor de mi escuela es que tenemos suerte porque hay una biblioteca grande donde <sup>usualmente</sup> <sup>para</sup> estudiar con mis amigos, y hablamos sobre nuestra revisión. <sup>es una pena</sup> Lo malo es que no haya <sup>un</sup> gimnasio ya que me encanta <sup>jugar</sup> <sup>deporte</sup>.

El verano pasado fui a Sevilla con mi familia. El primer día visitamos dos semanas allí. El primer día visitamos donde tuvimos que encontrar nuestra pintura favorita y mis profesores sacaron un foto de mi clase cerca. Por la tarde fuimos a la Parque de María Luisa para ver las vistas espectaculo y la puesta del sol fue extraordinario. Después de un día cansada viajamos en autocar a un albergue y nos alojamos allí para la noche. Me gustó donde nos quedamos puesto que fue colorido y espacioso. Los miércoles tomamos un lección de flamenco y vimos un espectáculo de flamenco al aire libre. Mis amigos disfrutaron el lección pero <sup>prefiero</sup> el espectáculo porque fue fenomenal. Más tarde fuimos a un mercado típico y compré la comida española. No me gustó mucho la comida dado que es demasiado picante y costó el ojo de la cara. Además el tiempo era demasiado <sup>caliente</sup> <sup>caliente</sup> y me duché cada día. Desafortunadamente el baño era bastante sucio lo que odió. Cuando era en Sevilla tenía <sup>un</sup> <sup>tiempo</sup> brillante y lo <sup>pasé</sup> <sup>bombas</sup> con mis amigos a pesar de que el albergue era un poco sucio. Como resultado de mi viaje escolar mi familia y yo vamos a Sevilla en el verano que viene. Espero que podemos ir a la Parque de María Luisa y sacaré más fotos con mi teléfono.

**Nombre:** Florie Hopkins

Describe tus pasatiempos en un blog.

Menciona:

- ¿Cuáles son las ventajas y desventajas de tu colegio?
- Un día memorable que tuviste en el colegio.

Escribe 150 palabras en español. Contesta a cada parte de la pregunta.

Una ventaja de mi colegio es que la mayoría de los profesores son simpáticos. Mi profesor de inglés nunca grita pero <sup>nos da</sup> <sup>demasiados</sup> <sup>deberes</sup>. Además lo que <sup>saca</sup> <sup>me</sup> <sup>chigan</sup> es las instalaciones. Hay muchos campos de fútbol y también tenemos suerte que hay varios laboratorios. Sin embargo es una pena que no haya piscina porque me encanta nadar con mis amigos. lo peor es que es obligatorio llevar unigormelo <sup>que</sup> <sup>que</sup> encuentro incómodo. Si pudiera elegiría llevar mi propia ropa así que <sup>podría</sup> <sup>expresar</sup> <sup>mi</sup> <sup>individualidad</sup>. creo que el <sup>unigorme</sup> <sup>es</sup> <sup>bastante</sup> <sup>sucio</sup> y cuesta el ojo de la cara.

El verano pasado fui a Sevilla con mi familia. Pasamos una semana allí. Primero fuimos a la playa donde nadé en el mar puesto que el tiempo era <sup>muy</sup> <sup>caliente</sup> <sup>caliente</sup>. Luego visitamos el museo de arte donde mis profesores sacaron muchas fotos <sup>de</sup> <sup>nos</sup> <sup>en</sup> <sup>el</sup> <sup>futuro</sup>. me gustaría ser un artista y cuando tengo tiempo voy a vender mi arte así que <sup>es</sup> <sup>un</sup> <sup>trabajo</sup> <sup>interesante</sup>. nos quedamos en un hotel pequeño pero no me gustó nada debido al hecho que <sup>es</sup> <sup>muy</sup> <sup>sucio</sup>. El último día, fuimos a un parque acuático lo que me encantó. Fue fenomenal! El año que viene espero volver a Sevilla con mi familia ya que sería increíble.

El día de Sevilla

Una ventaja de mi colegio es que las instalaciones son buenas. Hay muchos campos de fútbol y también tenemos suerte que hay varios laboratorios. Sin embargo es una pena que no haya piscina porque me encanta nadar con mis amigos. lo peor es que es obligatorio llevar unigormelo <sup>que</sup> <sup>que</sup> encuentro incómodo. Si pudiera elegiría llevar mi propia ropa así que <sup>podría</sup> <sup>expresar</sup> <sup>mi</sup> <sup>individualidad</sup>. creo que el <sup>unigorme</sup> <sup>es</sup> <sup>bastante</sup> <sup>sucio</sup> y cuesta el ojo de la cara.

El verano pasado fui a Sevilla con mi familia. Pasamos una semana allí. Primero fuimos a la playa donde nadé en el mar puesto que el tiempo era <sup>muy</sup> <sup>caliente</sup> <sup>caliente</sup>. Luego visitamos el museo de arte donde mis profesores sacaron muchas fotos <sup>de</sup> <sup>nos</sup> <sup>en</sup> <sup>el</sup> <sup>futuro</sup>. me gustaría ser un artista y cuando tengo tiempo voy a vender mi arte así que <sup>es</sup> <sup>un</sup> <sup>trabajo</sup> <sup>interesante</sup>. nos quedamos en un hotel pequeño pero no me gustó nada debido al hecho que <sup>es</sup> <sup>muy</sup> <sup>sucio</sup>. El último día, fuimos a un parque acuático lo que me encantó. Fue fenomenal! El año que viene espero volver a Sevilla con mi familia ya que sería increíble.



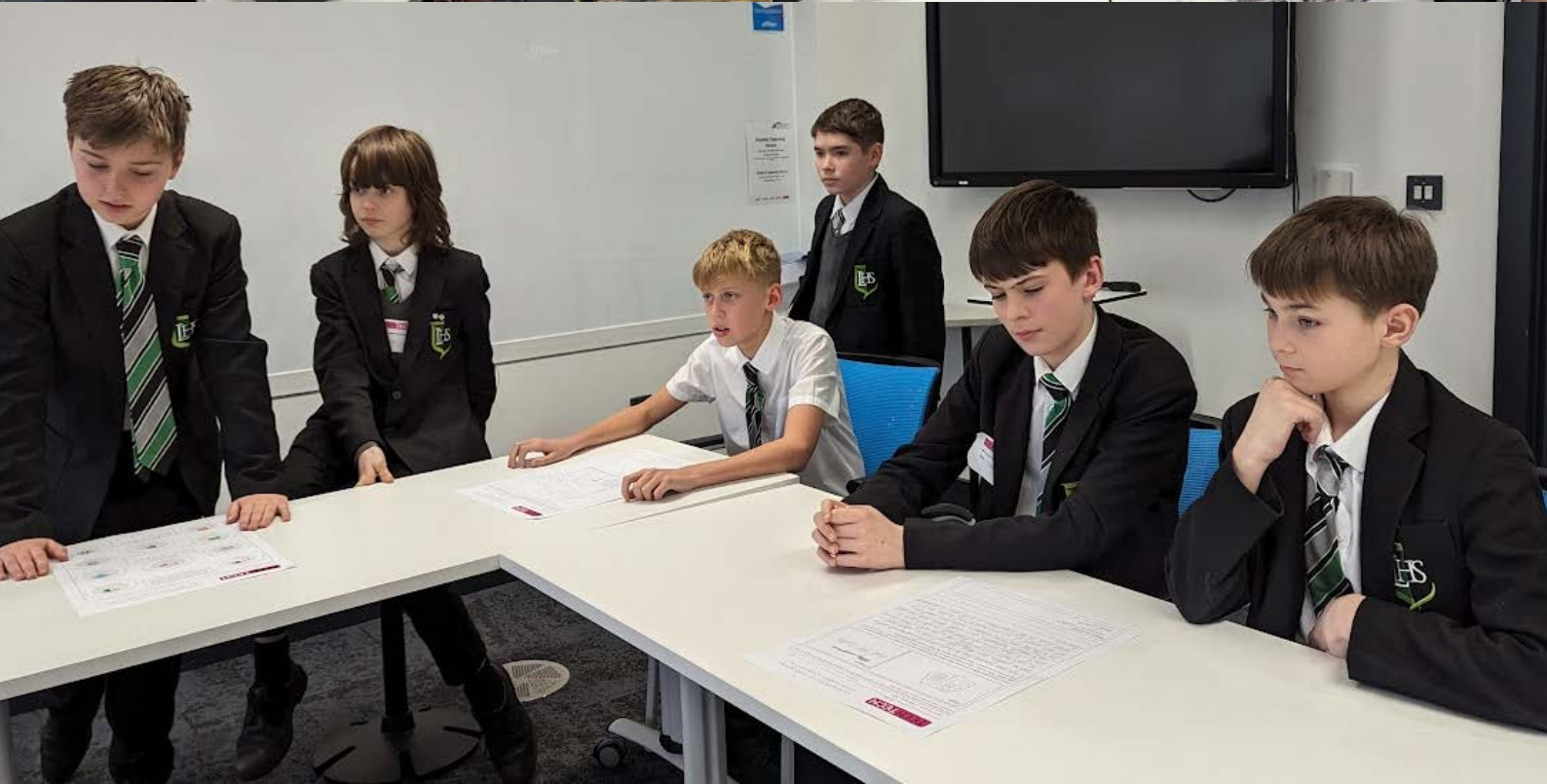
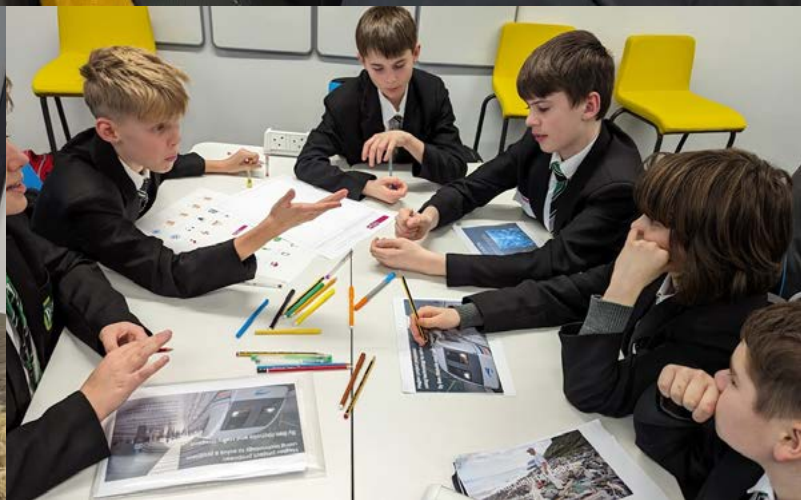
# TeenTech Festival

On Thursday 8th February, 12 of our Year 8s and 9s spent the afternoon at the MIRA innovation centre as part of a TeenTech Festival.

*"TeenTech Festivals are highly interactive and designed to inspire young teenagers and their teachers about the contemporary industries shaping their future."*

*"These TeenTech events give students and teachers from across a region the opportunity to try their hand at immersive challenges and experiments, to handle cutting edge technology and, most importantly, to spend time with engineers, technologists and scientists from a wide range of companies influencing their 21st-century lives."*

Students delivered their ideas for Innovative AI based products to people in the industry. Ziggy the Plant Watering Robot, was picked as the best pitch seen that day by their 'Dragons Den' technology bods.





## Biomedical Sciences Talk

This week we had another of our fantastic ex-students, Ellis McKeown, come in to talk to some of our Year 10 students. Ellis is studying Biomedical Sciences at The University of Sheffield and is currently on a placement year at GlaxoSmithKline Pharmaceuticals. She led a fantastic session all about studying Biomedical Sciences, as well as career paths it could lead to, and what it is like working in industry. Our students asked some excellent questions about further education and making informed choices for the future. Thank you so much to Ellis for coming in and delivering a great session.



## LHS Family Science Quiz

British Science Week is fast approaching between 8th-17th March and in addition to this, the Science department are going to host a Family Science quiz on Thursday 21st March from 6.30pm-8.00pm.

The quiz will comprise of science-related rounds and will hopefully raise funds to enable us to purchase new electrical equipment to deliver our physics curriculum and our target is £500.

Tickets will be available on Scopay and the cost is £5 per team (max. of 5 people per team).

We would welcome some help from parents to help us to organise a fundraising raffle in advance of the evening and we are also appealing for raffle prize donations in advance to help us to achieve our target. These can be brought to the science department after half term.

On the evening itself, refreshments will be available and you are welcome to 'bring your own bottle'. Please see the poster on the next page.

We look forward to seeing you there.

Mrs Bown  
Curriculum leader of Science





Celebrating National Science Week

# LHS FAMILY SCIENCE QUIZ

WITH RAFFLE

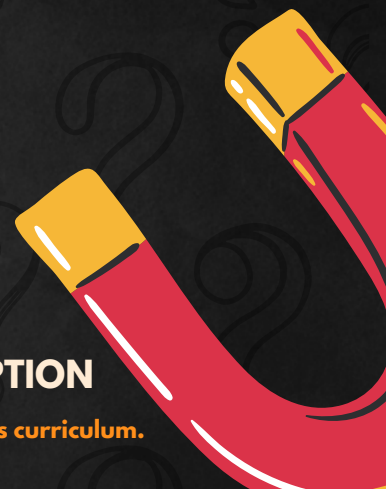
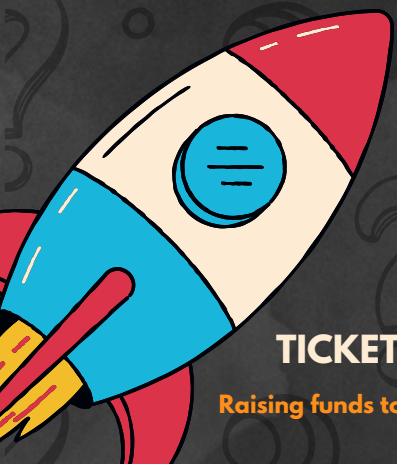
| THURSDAY 21ST MARCH 2024, 6.30-8.00PM |  
BRING A BOTTLE

# £5

PER TEAM  
(5 PEOPLE MAX)

TICKETS AVAILABLE ON SCOPAY & VIA MAIN RECEPTION

Raising funds to enable us to purchase new electrical equipment to deliver our physics curriculum.





THE  
EMERALD  
WAY

## CHARITY CORNER

Please find below a detailed plan of the chosen charities of Year 9. Students will be doing a variety of activities, raising awareness as well as funds, throughout their week for their chosen charity. Make sure to get involved in any way you can.

W/C 4th March - 9LB - [SSAFA, The Armed Forces Charity](#)

W/C 7th May - 9HM - [Young Minds](#)

W/C 10th June - 9HO - [Dementia UK](#)

## Revision Block 2

Monday 22<sup>nd</sup> January to Friday 8<sup>th</sup> March 2024

	Monday	Tuesday	Wednesday	Thursday	Friday
<b>Before school</b> 8am - 8.30am	<b>French - Rm15</b> 8.30-8.50am  <b>Spanish - Rm14</b> 8.30-8.50am	<b>Biology - Rm16</b> 6 mark questions 8.15-8.30am  <b>French - Rm15</b> 8.30-8.50am  <b>Spanish - Rm14</b> 8.30-8.50am	<b>Chemistry - Rm16</b> 6 mark questions 8.15-8.30am  <b>French - Rm15</b> 8.30-8.50am  <b>Spanish - Rm14</b> 8.30-8.50am	<b>Physics - Rm16</b> 6 mark questions 8.15-8.30am  <b>French - Rm15</b> 8.30-8.50am  <b>Spanish - Rm14</b> 8.30-8.50am	
<b>Lunchtime</b>	<b>Computer Science - Rm13</b> (Invite Only) DT revision - D5	DT revision - D5	PE GCSE - E7 12.45-1.10pm	DT revision - D5	
<b>After School</b> 3.05 – 3.50pm	<b>Maths F - Rm5</b> <b>H - Rm1</b> <b>Dance (Studio)</b> <b>Art - Drop in</b>	<b>Geography - Rm8</b> (Invite Only) <b>Business Studies - D3</b> <b>Food NEA - Rm17</b> <b>DT NEA - D5</b> <b>Art - Drop in</b>	<b>English - E2</b> <b>DT NEA - D5</b>	<b>*Science F - Rm17</b> <b>History - Rm11</b> <b>Art - Drop in</b> <b>**Perfectionism - Drop in - Rm19</b> (29th Feb - 1 session)	<b>Business Studies - D3</b> <b>Geography - Rm7</b> <b>History - Rm9</b> (Conflict & Tension)
<b>After School</b> 3.50pm – 4.30pm	<b>Music - Rm18</b> <b>Dance (Studio)</b> <b>Art - Drop in</b>	<b>Food NEA - Rm17</b> <b>DT NEA - D5</b> <b>Art - Drop in</b>	<b>RE - Rm10</b> <b>DT NEA - D5</b>	<b>*Science H - Rm17</b> <b>Art - Drop in</b>	<b>Food - Rm17</b> (Exam Revision)

\*Science F and H sessions to run parallel from 3.05-3.50 during Week 1 and 2 due to parents' evenings

\*\*Perfectionism drop in. Drop in for a chat about what perfectionism is and how you might deal with it, in the lead up to the next mock exams.



# SPORTS HIGHLIGHTS

Thursday 15th February  
Y9 A + B squad V Leicester Grammar School at home.

A Squad won 39 - 14  
Players player: Chilala Oyugi  
Coaches player: Izzy Clarke and Maria O'Connor

B Squad won 17 - 2  
Players player: Evie Atkinson  
Coaches player: Grace Page-Brown and Phoebe Sieling

A really good standard of netball in both matches. Well done!

Monday 12th February - Full matches V Leicester Grammar school at home.

Y10 A squad won 26 - 17  
Grace Tomlinson received both the players player and the coach's player award - Well done Grace!

Y10 B squad lost 2 - 25  
Players player: Viv Kudlicka  
Coaches' player: Poppy Lane

A very hard match, but two great goals against the run of the match.

Friday 9th February - South Leicestershire Tournament at Leicester Grammar School.

Y7 A Squad results:  
Lost to Leicester Grammar 3 - 4  
Beat Robert Smyth 10 - 3  
Beat St Martin's 5 - 2  
Beat Kibworth Mead 11 - 0

2nd Place overall - Well done girls!

Y7 B Squad results:  
The B squad played a number of different Leicester Grammar teams  
Match 1 LHS won 5 - 0  
Match 2 LHS won 8 - 0  
Match 3 LHS won 6 - 0  
Match 4 LHS won 4 - 1



First place in some style!

Monday 12th February - Full matches V Leicester Grammar school at home.

Y10 A squad won 26 - 17  
Grace Tomlinson received both the players player and the coach's player award - Well done Grace!

Y10 B squad lost 2 - 25  
Players player: Viv Kudlicka  
Coaches' player: Poppy Lane

A very hard match, but two great goals against the run of the match.

MONDAY	TUESDAY	WEDNESDAY	THURSDAY
<div>  <div> <b>AFTER SCHOOL</b>  <b>15:00-16:30</b> </div>  </div>			
<b>Boys Rugby</b> Yr.7 (MHO)	<b>Boys Rugby</b> Yr.9 + 10 (JJO)	<b>Boys Rugby</b> Yr.8 (TWH)	<b>Boys Rugby</b> Yr.11 (TWH)
<b>Mixed Basketball</b> Yr.10 (AMT)	<b>Mixed Basketball</b> Yr.8 (AMT)	<b>Mixed Basketball</b> Yr.7 (MHO)	
<b>Netball</b> All Years (ZTU)	<b>Girls Rugby</b> Yr.7-11 (TWH)		
	<b>Dance</b> Yr.9-11 (KBA)		<b>Dance</b> Yr.7-8 (KBA)
		<b>Mixed XC</b> Yr.7-11 (MNA)	<b>The Games</b> Invite Only (STO)



# ACTIVITY OVERVIEW - TERM 3

Days	Lunch 12.30-1.15pm	After School 3.00pm 3.00-4.00pm/4.15pm/4.30pm
Monday	12:30-13:15 Christian Union 12:30-13:15 Library Helper 12:45-13:15 Prom Committee 12:30-13.15 Library helpers	15:00-16:30 Netball 10 15:00-16:30 Netball 11 15:00-16:30 Netball 9 15:00-16:30 Rugby 7+8 15:05-16:30 Dance 15:10-16:00 Science7
Tuesday	12:30-13:15 Library helpers	15:00-16:15 Girls Rugby 15:00-16:15 Rugby 9/10 15:00-16:00 Dance Club 9-11 15:00-16:30 Netball 7 15:00-16:30 Netball 8 15:05-16:00 Silver DofE
Wednesday	12.30-13.10 Boccia 12.30-13:10 Pride Club 12:30-13:15 Library helpers	15:00-15:45 Orchestra 15:00-16:00 Bronze DofE 15:10-16:10 STEM Club 15:15-16:35 Cross Country Club 15:10-16:15 Textiles Club 15.00-16.00 Further Maths
Thursday	12:30-13:15 Language Leadership Award 12:40-13:10 Choir 12:45-13:15 Debate Society 13:30-15:00 Y7 Scholars Programme 12:30-13:15 Library helpers	15:00-15:45 Starbooks Cosy Reading Club 15:00-16:30 Dance Club 7-8 15:00-16:30 Rugby 11

THE  
EMERALD  
WAY



# COMMUNITY NOTICES

## **Girlguiding Blaby and Lutterworth**

Welcome to Blaby and Lutterworth Girlguiding. Did you know that we have groups in the following areas:

Broughton Astley, Lutterworth, Cosby, Countesthorpe, Blaby, Enderby, Narborough and Huncote.

We offer opportunities for girls aged 4-18 to gain confidence, have adventures and fun, while completing Girlguiding badges.

We are also looking to open lots of new Groups in Whetstone and Blaby areas.

If you think you could volunteer and help us open new groups, please register via [Become a volunteer | Girlguiding](#)

If you would like to register your daughter please do so via [Register a child | Girlguiding](#)

If you have further question you can email [ggblabylutterworth@gmail.com](mailto:ggblabylutterworth@gmail.com)





# COMMUNITY NOTICES

## DMU Inspire Easter programme 2024

This is a free, exciting, immersive, one, two or three day experience, at the De Montfort University (DMU) campus. The experience is open to all Year 10 and Year 11 learners.

This experience will be run during the Easter holiday and has been designed for year 10 and year 11 learners, who will join academics and experts in these specialist areas to develop skills that will help with future education progression and with college/sixth form and university personal statements.

Learners can pick from 10 schools/streams – a few more will be added in the next few days.

There is an [online application form](#). The most important part of the form is the 'Statement of Interest' section. This is their opportunity to clearly demonstrate to us their passion and enthusiasm for the stream or subject area, and tell us more about any relevant experiences they've had.

DMU Inspire online application forms can also be found here:



As this is outside of the school term, parents will need to sign up students themselves. Hopefully this will be an amazing opportunity for your year 10s a 11s skill development – both academic and soft skills.

Please let me know if you have any questions.

Mariska Niemeijer

[mniemeijer@lutterworthhigh.co.uk](mailto:mniemeijer@lutterworthhigh.co.uk)

### RECRUITING NOW!

SCHOOL YEAR 10-13  
AGE GRADES ,U16,U18

#GIRLSRUGBY

**Wednesdays,  
from 7pm  
(sunday games)**

"sessions are  
focused on fitness  
fun and learning  
new physical,  
leadership and  
teamwork skills

GET IN TOUCH TO FIND  
OUR MORE, OR COME  
ALONG & JOIN IN!



@LUTTSRFCGIRLS



ASHBY LANE,  
BITTISWELL  
LE17 4LW



## GIRLS RUGBY

AT LUTTERWORTH RFC

**JOIN US**

OPEN TO  
SCHOOL YEARS  
6-13

GET  
INTOUCH  
07970433452



WEDNESDAY EVENINGS FROM 6.30 PM  
SUNDAY AFTERNOON GAMES

@LUTTSRFCGIRLS



ASHBY LANE,  
BITTISWELL  
LE17 4LW

TRY RUGBY  
WITH US!

# Mental Health

## NEWSLETTER

FEBRUARY 2024

### WHAT IS MENTAL HEALTH?

Mental health includes our emotional, psychological and social well-being. It affects how we think, feel and act. It also helps determine how we handle stress, relate to others and make choices. Mental health is important at every stage of life, from childhood and adolescence through to adulthood.



### Did you know?

One in **five** children aged 5 to 16 were identified as having a probable mental health disorder in 2023. That's **6** children in every classroom!

Source; Mental Health of Children and Young People Survey, NHS 2023 )

### SIGNS TO LOOK OUT FOR

There are lots of different ways that poor mental health in young people can present.

This includes;

- Crying more than usual or persistent sadness
- Disrupted sleep patterns
- Difficulty in concentrating
- Losing interest in friends and other things they like doing
- Being reluctant to talk
- Irritability and aggression, particularly if this includes unprompted outbursts.
- Changes in appetite or rapid weight loss or weight gain.



THE NHS HAS MORE INFORMATION  
ON SIGNS TO LOOK OUT FOR [HERE](#)



# ADVICE AND SUPPORT

There are a number of services and charities that can offer advice and support on all areas of mental health in young people. Click on the logos to head straight to their website!

**YOUNG MINDS**

*mind*



**NHS**

**NSPCC**



FIND LOCAL MENTAL HEALTH SUPPORT HERE

**Place2Be's  
CHILDREN'S  
MENTAL HEALTH  
WEEK**

5-11  
FEB  
2024

## Key February dates

- Time to Talk day - 1st
- Children's Mental Health Week - 5-11th
- Safer Internet day - 6th
- Eating Disorders Awareness Week - 25th-2nd March

TIME TO TALK DAY, FIND OUT MORE HERE!

The Place2Be's Children's Mental Health Week takes place from the 5-11th February and aims to shine a spotlight on the importance of children and young people's mental health. Now in its ninth year, they hope to encourage more people than ever to get involved, spread the word, and raise vital funds for children's mental health.

Find out more about how you can get involved here!



LET'S GET SOCIAL



# e-SERVICES

## KEEPING US CONNECTED

### 'BYOD' Bring Your Own Device

We invite all students to bring in their own devices to connect to our school WiFi. This includes mobile phones, laptops, tablets and iPads.

If your child would like to take advantage of our 'BYOD' provision, please ensure you sign the 'ICT Acceptable Use Policy' letter and also fill out the 'New Technologies' consent form, both of which can be found at Student Reception.

Please hand back in to Student Reception upon completion in order to start using your devices.

### EduLink

The EduLink App provides a convenient and accessible way for us to communicate with parents on some of the main aspects of daily school life.

It's easy to use and is accessible from a smart phone, tablet or PC. You can use the app to report an absence easily and also book appointments for your child's Parents' Evening.

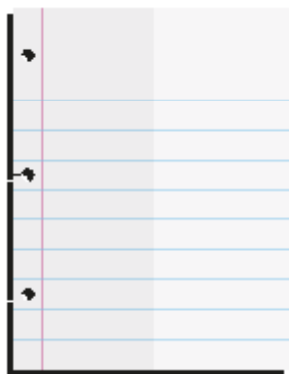
If you haven't already been issued with login details, please contact the EduLink team on the below email address [edulinkapp@lutterworthhigh.co.uk](mailto:edulinkapp@lutterworthhigh.co.uk) If you need to register, click here.

### NEED HELP?

If you have any queries or need IT assistance, do not hesitate to email [eservices@lutterworthhigh.co.uk](mailto:eservices@lutterworthhigh.co.uk)



## OFFICE 365 - STUDENT ADVANTAGE & TEAMS



## Stock up for academic success with free Office.

Students get a complete version of the latest Microsoft Office for free to use for as long as they're students!

Visit our the website and go to Menu - Students - Student Zone



## DATES FOR YOUR DIARY

Thursday 15th February 2024 - Year 9 Options Evening

Thursday 7th March - Plan, Prepare, Achieve (Year 11)

Thursday 25th April - Year 11 Parents' Evening

Thursday 9th May - Year 7 Parents' Evening

Thursday 23rd May - Year 10 Parents' Evening

Tuesday 25th June - Summer Concert

Wednesday 26th June 2024 - Year 11 Prom

Thursday 27th June - New Parents' Information Evening

AUTUMN TERM 2023	FROM THE MORNING OF:	UNTIL THE END OF:
Autumn 1st half term	Tuesday 29 <sup>th</sup> August 2023	Friday 13 <sup>th</sup> October 2023
Mid-term break	Monday 16 <sup>th</sup> October 2023	Friday 20 <sup>th</sup> October 2023
Autumn 2nd half term	Monday 23 <sup>rd</sup> October 2023	Friday 22 <sup>nd</sup> December 2023 12.30pm

SPRING TERM 2024	FROM THE MORNING OF:	UNTIL THE END OF:
Spring 1st half-term	Tuesday 9 <sup>th</sup> January 2024	Friday 16 <sup>th</sup> February 2024
Mid-term break	Monday 19 <sup>th</sup> February 2024	Friday 23 <sup>rd</sup> February 2024
Spring 2nd half-term	Monday 26 <sup>th</sup> February 2024	Friday 22 <sup>nd</sup> March 2024

SUMMER TERM 2024	FROM THE MORNING OF:	UNTIL THE END OF:
Summer 1st half-term	Monday 8 <sup>th</sup> April 2024	Friday 24 <sup>th</sup> May 2024
May Day	Monday 6 <sup>th</sup> May 2024	Monday 6 <sup>th</sup> May 2024
Mid-term break	Monday 27 <sup>th</sup> May 2024	Friday 31 <sup>st</sup> May 2024
Summer 2nd half-term	Monday 3 <sup>rd</sup> June 2024	Wednesday 10 <sup>th</sup> July 2024

AUGUST TERM 2024	FROM THE MORNING OF:	UNTIL THE END OF:
Autumn 1st half term	Tuesday 27 <sup>th</sup> August 2024	Friday 18 <sup>th</sup> October 2024
Mid-term break	Monday 21 <sup>st</sup> October 2024	Friday 25 <sup>th</sup> October 2024
Autumn 2nd half term	Monday 28 <sup>th</sup> October 2024	Friday 20 <sup>th</sup> December 2024

SPRING TERM 2025	FROM THE MORNING OF:	UNTIL THE END OF:
Spring 1st half-term	Tuesday 7 <sup>th</sup> January 2025	Friday 14 <sup>th</sup> February 2025
Mid-term break	Monday 17 <sup>th</sup> February 2025	Friday 21 <sup>st</sup> February 2025
Spring 2nd half-term	Monday 24 <sup>th</sup> February 2025	Friday 11 <sup>th</sup> April 2025

SUMMER TERM 2025	FROM THE MORNING OF:	UNTIL THE END OF:
Summer 1st half-term	Monday 28 <sup>th</sup> April 2025	Friday 23 <sup>rd</sup> May 2025
May Day	Monday 5 <sup>th</sup> May 2025	Monday 5 <sup>th</sup> May 2025
Mid-term break	Monday 26 <sup>th</sup> May 2025	Friday 30 <sup>th</sup> May 2025
Summer 2nd half-term	Monday 2 <sup>nd</sup> June 2025	Wednesday 9 <sup>th</sup> July 2025