



@LuttHigh



LuttHigh



Lutterworth High School Academy Trust

Friday 9th February 2024



Dear Parents/ Carers

Welcome to our weekly newsletter. As you are aware, this week we have had an Ofsted section 5 inspection over the course of two days. I would like to thank you for sharing your thoughts on the school through the parent view. Our students were an absolute credit to the school and I am so proud of our students and our very tired staff.

Our prom committee are being very proactive in raising funds for their prom and are holding a raffle. If you have any unwanted gifts can you please pop them into the main reception.

We look forward to welcoming our Year 9 parents and students next Thursday 15th February for the Options Evening.

Well done to Montgomery House who raised £620.83 for the Mind charity this week. Thank you to parents/carers for donating.

Have a great weekend.

Yours faithfully

Julian Kirby
Headteacher




NOTICEBOARD

YEAR BOOKS!

Our Leavers' Yearbooks are about to go into production. **Don't leave school without one! You only have one chance to order yours. Only one print run will be done.**

To make sure that you get one, please speak to:

 Miss Robinson

PLACE YOUR ORDER NOW!

FIZZ YEARBOOKS

Sorry - after this date: **Sunday 10th March 2024** it's just too late!

2024 LEAVERS' HOODIES!

Our Leavers' Hoodies are about to be ordered!

To make sure that you get yours, please speak to:

 Miss Robinson

They cost: **£25**

PLACE YOUR ORDER NOW!



FIZZ HOODIES

Sorry - after this date: **Sunday 10th March 2024** it's just too late!

Sunday 10th March 2024

HOT CHOC FRIDAY

Well done to the following students who have achieved a Hot Choc Friday award this week.



LEARNING HUB SHOP

Scientific Calculators and Art Sketchbooks can be ordered on Scopay. All other items are cash only.

STATIONERY AND EQUIPMENT

Black pen	10p
Blue pen	10p
Red pen	10p
Purple pen	15p
Pencil	5p
Eraser	5p
Sharpener	10p
15cm ruler	10p
Compass + pencil	30p
Protractor	10p
Post-it notes (smallx100)	30p
Revision flash cards	£1
Plastic wallet	2p
A4 ring binder	80p
A4 folder dividers x5	50p
A4 folder dividers x10	75p
Small notebook	30p
Pastel highlighters	20p
Scientific Calculator	£10.75

ART SUPPLIES

A3 sketchbook portrait	£6.60
A3 sketchbook landscape	£6.60
A3+ clear carry folder with handles	£2.10
A3 display book	70p
Black fine liner	80p
Black broad liner	80p

HOW TO REPORT A CONCERN AT LUTTERWORTH HIGH SCHOOL



Tell a teacher, your tutor or go to KS3/KS4 Hubs to speak to a member of staff



Tell your parents or a friend, who can report on your behalf



Self report to
ks3@lutterworthhigh.co.uk
ks4@lutterworthhigh.co.uk



Forms outside KS3 and post in the letterbox



Speak Out button on the school website
www.lutterworthhigh.co.uk/student

House Points

KS3	Yasmin Ismail 8HG (38)	Emily Dand 7LH (36)	Nathan Dew 7LH (55)	Ben Nicholls 8LM (56)
KS4	Michael Josiah 10HB (52)	Henry Golding 10LT (32)	Daniel Faulkner 10LM (37)	Harvey Corcoran 11LFC (34)



LHS DANCE SHOW

| WEDNESDAY 28TH FEBRUARY 2024 |

6.00PM | £5



TICKETS ON SALE VIA SCOPAY OR MAIN RECEPTION



Ofsted
Outstanding
2011/2012



YEAR 9 OPTIONS EVENING

THURSDAY 15TH FEBRUARY 2024
5.30-8.00PM

Students will have the chance to find out about our wide range of exciting GCSE options and meet our specialist subject teachers.

There will be two talks by the headteacher, one at 5.45pm and the other at 6.30pm. These talks are the same, so you only need attend one.

www.lutterworthhigh.co.uk
01455 552710
admin@lutterworthhigh.co.uk

NOTICEBOARD

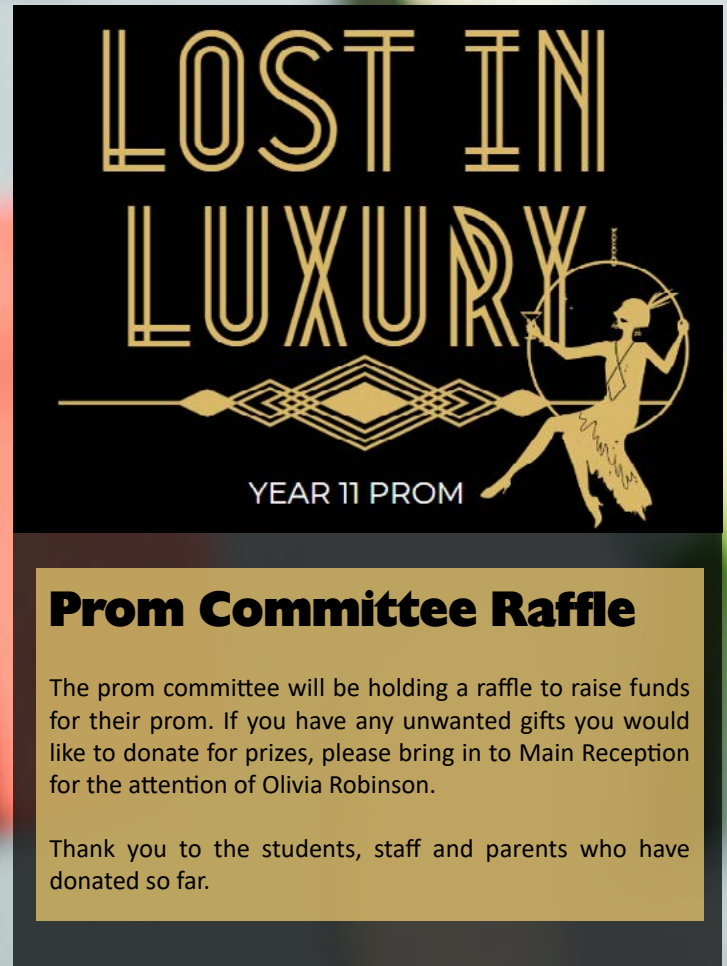


**ARTS
IN THE HALL**

Complimentary ticket
with donations to the Music
Department gratefully received

Wednesday 20th March 2024
6.00-7.00pm

LHS



**LOST IN
LUXURY**

YEAR 11 PROM

Prom Committee Raffle

The prom committee will be holding a raffle to raise funds for their prom. If you have any unwanted gifts you would like to donate for prizes, please bring in to Main Reception for the attention of Olivia Robinson.

Thank you to the students, staff and parents who have donated so far.

Year 9 MFL Trip

On Tuesday, a group of Year 9 students went on a trip to the University of Leicester to find out about studying languages at University. The trip included 'A day in the life of a student' talk, Q and A sessions with current third year students, a tour of the campus, options and future pathways discussion, a Spanish session and a talk on what studying languages at university entails and what options and career paths languages open up for students beyond GCSE. The day was fantastic, it was informative, exciting and included lots of different aspects of university life. The students enjoyed it immensely and were a credit to our school with their polite, respectful, impeccable attitudes and behaviour.



YEARS' 7&8

Valentine's

CARD & POEM COMPETITION

Design a Valentine's Day card and write your very own poem inside!

Two prizes on offer!

- One for a poem in the style of a sonnet
- One for a poem in a style of your choice

Entries need to be given to Mrs Dovey in E1 by Monday 12th February.

Winners will be announced on Valentine's Day.

LHS



HAPPY *Chinese* new year

MENU

Thursday 15th February

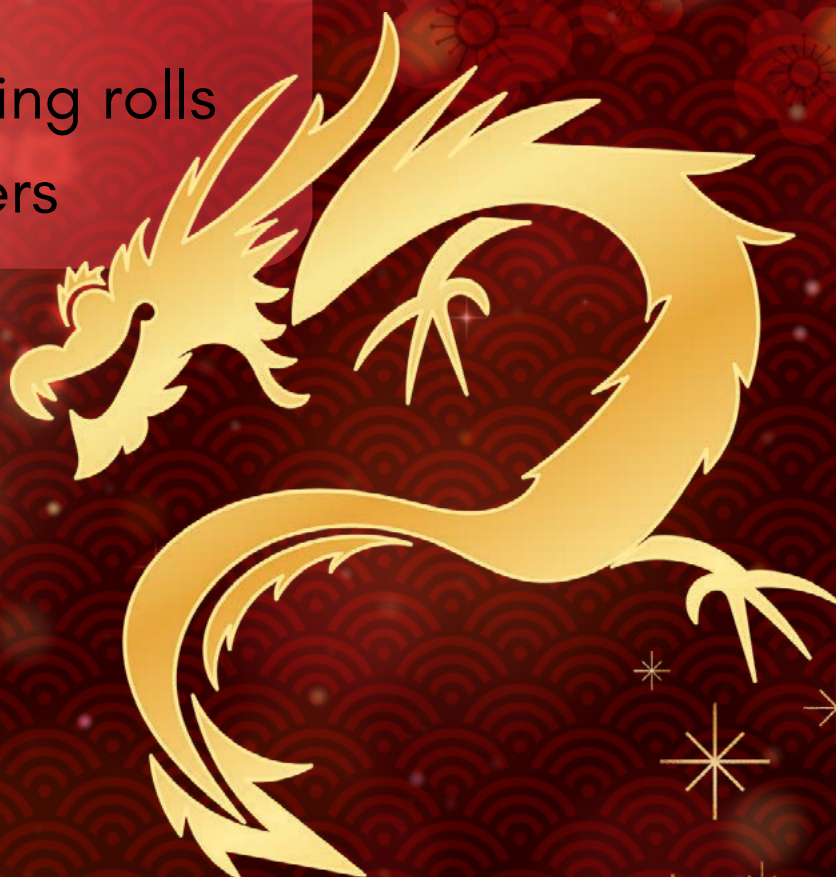
Sweet and sour chicken curry

Sweet and sour Quorn curry

Vegetable fried rice

Mini vegetable spring rolls

Prawn crackers



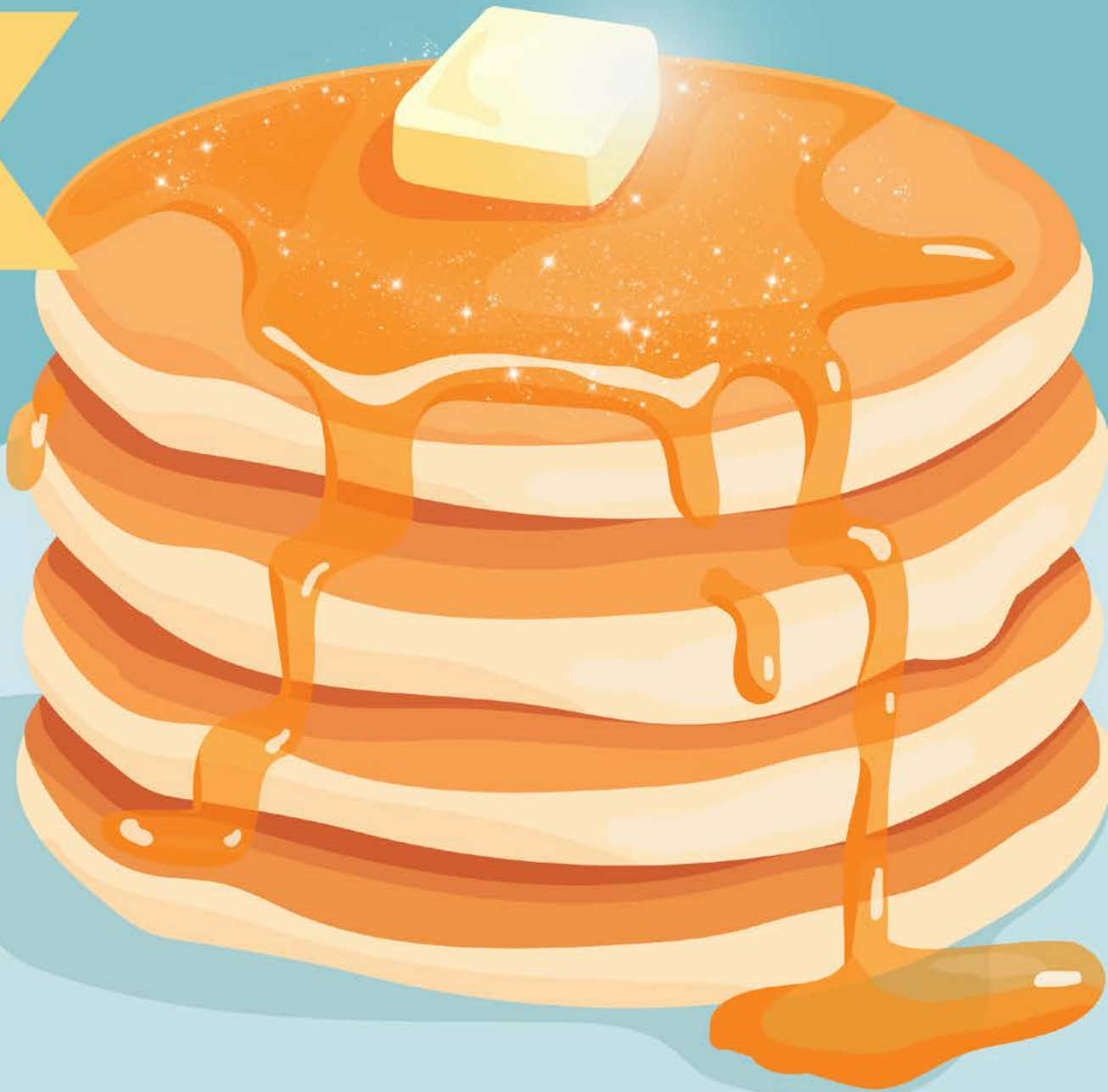


PANCAKE DAY

TUESDAY 13TH FEBRUARY 2024

Served at breacktime in the Canteen

WITH
MAPLE SYRUP
& ICING SUGAR





WORLD BOOK DAY 7TH MARCH 2024

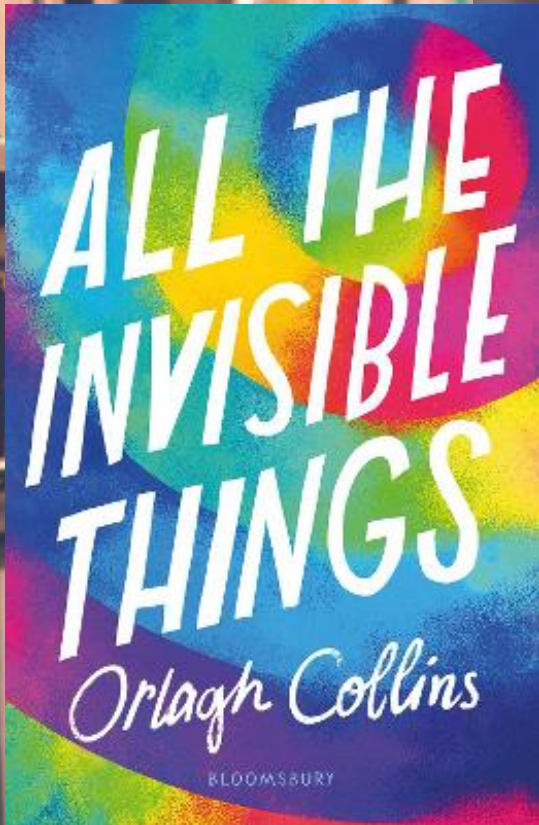
Bookish costume competition
Bookmark design competition
Bookish Bake Sale
Big Book Swap
and more!

1
MONTH
TO GO

More details to come!



Book of the Month February



All the Invisible Things by Orlagh Collins

This authentic YA page-turner about making sense of the whirlwind that is growing-up fizzes with heart, humanity and honest true-to-life experiences.

For the past few years Vetty, her dad and little sister Ariel have been living with her aunt, trying to get themselves back on track after the death of her mum. On top of this, Vetty is struggling with her sexuality, trying to make sense of the fact that she's attracted to boys and girls.

You can find other LGBTQ+ books in the Learning Hub by looking out for the Pride Heart stickers!





LGBT+ HISTORY MONTH

Just a few of our favourite LGBT+ authors whose books are available in the Learning Hub!



Simon James Green



Erik J. Brown



Akwaeke Emezi

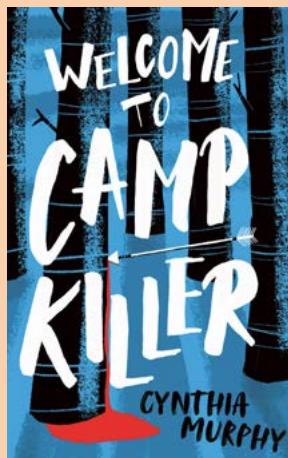


Alice Oseman

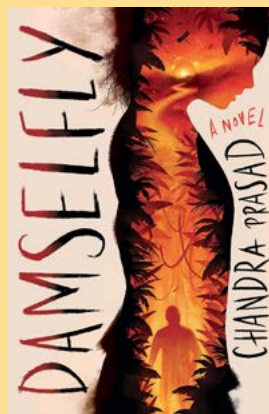


Florence Smith
Year 7
7/10

"A minor horror; quite scary, but very enjoyable"



Miss Chapman
Librarian
'Damsel'fly'
by
Chandra Prasad



I listened to this as an audiobook on the free BorrowBox library app. It follows a group of boarding school students stranded on an inhospitable tropical island after their plane crashes. If you've read or heard of 'Lord of the Flies', it's very similar, but it also touches on issues of race, gender and social class, and the characters are realistically flawed and relateable teenagers.



HOUSE READING CHALLENGE



Earn House Points by borrowing and reading books!

1. Borrow a book
2. Return it with a Rapid Review slip
3. Get a token for your house

CUNNINGHAM IS CURRENTLY IN THE LEAD



Each half-term the house with the most tokens will win 100 house points and one lucky reader will win a prize.

2nd place = 75 points

3rd place = 50 points

4th place = 25 points

5 WAYS TO WELL-BEING

Place2Be's

CHILDREN'S
MENTAL HEALTH
WEEK

5-11
FEB
2024

This Children's Mental Health Week, we've been thinking about the ways we can look after our own mental health.

Connect

We spend a lot of time on our phones, but are we really connecting in a valuable way? Set aside some time when you put your phone away and have a conversation with someone.

Be Active

You don't have to run a marathon to be active. Just getting your body moving can relieve enough stress and tension to brighten your mood.

Take Notice

Take time on your own, preferably outside, and take in your surroundings. Watch a dog play on the park, or a bird hopping along a fence. It might sound too simple but it works!

Give

One of the easiest ways to give is to compliment someone. It seems simple but it has the power to change their day.

Keep Learning

You might only associate learning with school, but we are constantly learning. The key is to be aware of it so that you can appreciate the satisfaction of knowing you've made progress.

DISTINCTION AWARDS

Erin Aldridge 10HE	Izzy Kirby 11HH
Louie Bailess 9LA	Vivien Kudlicka 10LT
Trinity Barnes 9HO	Sophia Lefley 8LE
Lois Barnett 7LC	Rhys Lenton 10HE
Anya Barnwell 11LFD	Indi Lockwood 9HM
Emma-Mollie Bayliss 9LA	Milena Lopata 9HC
Angel Bell 8HS	Evie Mann 11LSD
Elliott Braithwaite 8HS	Sophie Marsden 9LA
Ava Butcher 8HG	Neave McGanley 8LM
Bazsi Butosi 8HS	George Mears 10HL
Paige Callow 9LB	William Mears 10HE
Jude Carter 9HO	Botond Mecs 11HW
Sophie Chapman 11LFD	Julia Melville 10LT
Phoebe Clelland 9LB	Millie Moore 9LA
Rin Coleman 11HL	Fleur Moulton 11LFC
Daisy Crosskey 9LN	Zainab Nasrallah 10HB
Harry Dale 10HB	Lili Oliver 11HL
Nathan Dew 7LH	Nancy Owen 9LA
Joseph Dewes 10HE	Isla Palmer 10HE
Aiden Dressler 8LM	Maya Patel 9LN
Asma Faizi 8LM	Bethany Richards-Gunter 10HB
Daniel Faulkner 10LM	Evie Roberson 9HM
Madison Finney 10LM	Ollie Robinson 9LN
Elizabeth Fletcher 10HE	Sophia Rochelle 11HJ
Jess Ford 9LN	Jude Rymell 7LC
Henry Golding 10LT	Ella Schofield 10HE
Joseph Gray 9LA	Berin Shipley 7HR
Luke Green 7LH	Phoebe-Mae Sieling 9LB
Olivia Green 10LT	Lewis Simmons 10HL
Harry Gregson 8LE	Charlie Simons 8LE
Jacob Harris 10LK	Alfie Simons 10LK
Isabella Heneghan 9HO	Ella Sutton 9HC
Ethan Hetherington 9HM	Megan Thomas 8HO
Rebekah Hollingworth 9HO	Adam Thomas 10LK
Cosmo Hubbard 9HM	Megan Weston 8HS
Jesse Izzard-Snape 9LN	Alex Winterton 9HC
Bronwen Jenkins 10LT	Summer Wood 8HS
Megan Johnson 8HG	Ava Woodward 9HO
Abby Keyworth 7HR	

WOW WORK HISTORY



Well done to these Year 7 students for their Doom paintings in History.

Lots of creativity skills and hard work represented in these pieces of work.





THE
EMERALD
WAY

CHARITY CORNER

Please find below a detailed plan of the chosen charities of Year 9. Students will be doing a variety of activities, raising awareness as well as funds, throughout their week for their chosen charity. Make sure to get involved in any way you can.

W/C 12th February - 9LN - [Teenage Cancer Research](#)
W/C 4th March - 9LB - [SSAFA, The Armed Forces Charity](#)
W/C 7th May - 9HM - [Young Minds](#)
W/C 10th June - 9HO - [Dementia UK](#)

Revision Block 2

Monday 22nd January to Friday 8th March 2024

	Monday	Tuesday	Wednesday	Thursday	Friday
Before school 8am - 8.30am	French - Rm15 8.30-8.50am Spanish - Rm14 8.30-8.50am	Biology - Rm16 6 mark questions 8.15-8.30am French - Rm15 8.30-8.50am Spanish - Rm14 8.30-8.50am	Chemistry - Rm16 6 mark questions 8.15-8.30am French - Rm15 8.30-8.50am Spanish - Rm14 8.30-8.50am	Physics - Rm16 6 mark questions 8.15-8.30am French - Rm15 8.30-8.50am Spanish - Rm14 8.30-8.50am	
Lunchtime	Computer Science - Rm13 (Invite Only) DT revision - D5	DT revision - D5	PE GCSE - E7 12.45-1.10pm	DT revision - D5	
After School 3.05 – 3.50pm	Maths F - Rm5 H - Rm1 Dance (Studio) Art - Drop in	Geography - Rm8 (Invite Only) Business Studies - D3 Food NEA - Rm17 DT NEA - D5 Art - Drop in	English - E2 DT NEA - D5	*Science F - Rm17 History - Rm11 Art - Drop in **Perfectionism - Drop in - Rm19 (29th Feb - 1 session)	Business Studies - D3 Geography - Rm7 History - Rm9 (Conflict & Tension)
After School 3.50pm – 4.30pm	Music - Rm18 Dance (Studio) Art - Drop in	Food NEA - Rm17 DT NEA - D5 Art - Drop in	RE - Rm10 DT NEA - D5	*Science H - Rm17 Art - Drop in	Food - Rm17 (Exam Revision)

*Science F and H sessions to run parallel from 3.05-3.50 during Week 1 and 2 due to parents' evenings

**Perfectionism drop in. Drop in for a chat about what perfectionism is and how you might deal with it, in the lead up to the next mock exams.



Miss N Science @MissN LHS · Feb 7
Always a favourite with our XC runners - the country park! A figure of eight run around the park, team sprints, a game of manhunt and then a team challenge before we headed back to school! @LutHigh



Mrs Bown @Bown1Mrs
A VERY successful day at @teentechevent @MTLTweets for our STEM students with @KeatmanMrs
The students thoroughly enjoyed it and there is more to come! See next weeks newsletter! @LutHigh



ZODScience @zodscience · 3h
Year 8 today using tuning forks to investigate how sound travels. Fantastic engagement from all. Well done 8L F! @LutHigh





Mrs Gupta @MrsAGupta · 20h
Our wonderful Year 10 students were treated to a special Space class today! hydrogen-powered rockets!..thanks a lot Emily for the wonderful experience @LutHigh @UKSpaceAcademy



Mrs Tomlinson @MrsTomlinsonLHS · 14h
@HeadofPELut Well done girls for coming 3rd in the Level 3 Trampoline Competition at Robert Smyth Academy.



FOLLOW US @LUTTHIGH

MONDAY	TUESDAY	WEDNESDAY	THURSDAY
<div>  <div> AFTER SCHOOL 15:00-16:30 </div>  </div>			
Boys Rugby Yr.7 (MHO)	Boys Rugby Yr.9 + 10 (JJO)	Boys Rugby Yr.8 (TWH)	Boys Rugby Yr.11 (TWH)
Mixed Basketball Yr.10 (AMT)	Mixed Basketball Yr.8 (AMT)	Mixed Basketball Yr.7 (MHO)	
Netball All Years (ZTU)	Girls Rugby Yr.7-11 (TWH)		
	Dance Yr.9-11 (KBA)		Dance Yr.7-8 (KBA)
		Mixed XC Yr.7-11 (MNA)	The Games Invite Only (STO)

ACTIVITY OVERVIEW - TERM 3

Days	Lunch 12.30-1.15pm	After School 3.00pm 3.00-4.00pm/4.15pm/4.30pm
Monday	12:30-13:15 Christian Union 12:30-13:15 Library Helper 12:45-13:15 Prom Committee 12:30-13.15 Library helpers	15:00-16:30 Netball 10 15:00-16:30 Netball 11 15:00-16:30 Netball 9 15:00-16:30 Rugby 7+8 15:05-16:30 Dance 15:10-16:00 Science7
Tuesday	12:30-13:15 Library helpers	15:00-16:15 Girls Rugby 15:00-16:15 Rugby 9/10 15:00-16:00 Dance Club 9-11 15:00-16:30 Netball 7 15:00-16:30 Netball 8 15:05-16:00 Silver DofE
Wednesday	12.30-13.10 Boccia 12.30-13:10 Pride Club 12:30-13:15 Library helpers	15:00-15:45 Orchestra 15:00-16:00 Bronze DofE 15:10-16:10 STEM Club 15:15-16:35 Cross Country Club 15:10-16:15 Textiles Club 15.00-16.00 Further Maths
Thursday	12:30-13:15 Language Leadership Award 12:40-13:10 Choir 12:45-13:15 Debate Society 13:30-15:00 Y7 Scholars Programme 12:30-13:15 Library helpers	15:00-15:45 Starbooks Cosy Reading Club 15:00-16:30 Dance Club 7-8 15:00-16:30 Rugby 11

THE
EMERALD
WAY



COMMUNITY NOTICES

RECRUITING NOW!

SCHOOL YEAR 10-13
AGE GRADES ,U16,U18

#GIRLSRUGBY

**Wednesdays,
from 7pm
(sunday games)**

"sessions are
focused on fitness
fun and learning
new physical,
leadership and
teamwork skills



@LUTTSRFCGIRLS



ASHBY LANE,
BITTESWELL
LE17 4LW

GET IN TOUCH TO FIND
OUT MORE, OR COME
ALONG & JOIN IN!



GIRLS RUGBY

AT LUTTERWORTH RFC

@LUTTSRFCGIRLS



ASHBY LANE,
BITTESWELL
LE17 4LW

JOIN US

OPEN TO
SCHOOL YEARS
6-13

GET
INTOUCH
07970433452

WEDNESDAY EVENINGS FROM 6.30 PM
SUNDAY AFTERNOON GAMES



Trailblazers
FROM CYBERFIRST

Cyberfirst

THIS IS A WORLD WHERE TECHNOLOGY IS EVERYWHERE

This is a Cyberfirst world.

These exciting activities are aimed at Year 8 to help parents and students choose their subjects at GCSE's. It gives students and their families an opportunity to see how studying Computer Science can help improve the understanding of technology in the workplace and in their homes. As a country we are becoming more digital with everything we do; let's learn to use it and defend it.

Cyberfirst Trailblazers is a free half day event created for Year 8 students. The event is designed to showcase the varied opportunities that can be achieved through the understanding of how technology is used in the workplace. This is the first in a series of CyberFirst events which will start each student on the exciting path of considering which GCSE's they will take and how Computer Science can play a key role in future career prospects. An accompanying parent or guardian is welcome to attend for a specifically designed talk and some light refreshments.

Go Create – Learn the basics of how to customise a website and generate enthusiasm to contribute to the World Wide Web.

Digital Detective – Use digital forensics to identify the first person who has contracted a disease and learn how open source intelligence can lead to finding out more information about this person.

Creative Computing – Look into how creative design, arts and technology work together. Take a closer view on how the media industry and advertising combine these elements while having the chance in teams to create your own advert sequence using stop motion.



LEARNING

Adventurers
FROM CYBERFIRST

Cyberfirst

THIS IS A WORLD WHERE TECHNOLOGY IS EVERYWHERE

This is a Cyberfirst world.

These exciting activities are aimed at Year 9 to help parents and students choose their subjects at GCSE's. It gives students and their families an opportunity to see how studying Computer Science can help improve the understanding of technology in the workplace and in their homes. As a country we are becoming more digital with everything we do; let's learn to use it and defend it.

Cyberfirst Adventurers is a free half day event created for Year 9 students. This is the second in a series of events which has been created, to highlight the varied roles and jobs that both exist and involve technology in the workplace. This will excite and enthuse students with an interest in technology, both in what we use now and in the future. It has also been designed to counter the stereotype that computer science is a subject that only leads to jobs in programming and coding. The course is aimed at students who have not yet made their GCSE choices, so that they get the opportunity to see how studying computer science could potentially augment and enhance their future career paths. An accompanying parent or guardian is welcome to attend for a specifically designed talk and some light refreshments.

The Data Games – Understand and use big data to create the perfect team using a set of sports results, compare with others and learn the interpretation of data.

Crack the Code – Against the clock you will work within teams to unlock various devices, during this you will get a taste of cryptography, language analysis and understand some cyber security terms. But don't be distracted as the timer won't stop until you Crack the Code.

Engineering – 3D printers have started to revolutionise the engineering industry, have a look into how technology and engineering fit together and move into the future in partnership. Have the chance to create your very own model using 3D design software.



LEARNING

COMMUNITY NOTICES

Coming Soon...



Lutterworth Community Fridge Volunteers Needed

Can you spare 2-3 hours a week ?

Volunteers required to help support various roles in running our new community fridge.

If you care about the environment & dislike food waste, call Sam on 0116 3052229 for more information or visit:

<https://www.leicestershire.gov.uk/jobs-and-volunteering/volunteering/volunteer-with-the-children-and-family-wellbeing-service>

Training will be provided, different roles and sessions available



**Leicestershire
County Council**

MAKE YOUR HOME A FIZZ FREE ZONE

Forget fizzy drinks this February



SAVE
MONEY



LOSE
WEIGHT



KEEP
YOUR
TEETH



Make your pledge
to **#gofizzfree**

How much do you know about sugar?

How many calories are in one teaspoon or cube (4g) of sugar?

- | | |
|-------------|-------------|
| 10 calories | 4 calories |
| 40 calories | 16 calories |

What's the maximum daily amount of sugar a 4 - 6 year old should have?

- | | |
|----------------|----------------|
| 10 cubes (39g) | 13 cubes (51g) |
| 2 cubes (7g) | 5 cubes (20g) |

What is the most common cause of hospital admission in 5 - 9 year olds?

- | | |
|-------------------|--------------|
| Tooth extractions | Broken bones |
| Cuts and grazes | Cold and flu |

The label of a cereal bar says it has 35g of sugar per 100g.

Is it high or low in sugar?

Which of these isn't a type of sugar?

- | | |
|---------|----------|
| Sucrose | Molasses |
| Gluten | Treacle |

When is the best time to eat dried fruits such as raisins?

During a meal or as a snack?

Which of the following are high sources of sugar in children's diets?



What can too much sugar do to a child's body?

- Cause tooth decay
- Create a build-up of harmful fat
- Develop type 2 diabetes
- Heart disease

A LITTLE TRIP TO THE DENTIST

Mental Health

NEWSLETTER

FEBRUARY 2024

WHAT IS MENTAL HEALTH?

Mental health includes our emotional, psychological and social well-being. It affects how we think, feel and act. It also helps determine how we handle stress, relate to others and make choices. Mental health is important at every stage of life, from childhood and adolescence through to adulthood.



Did you know?

One in **five** children aged 5 to 16 were identified as having a probable mental health disorder in 2023. That's **6** children in every classroom!

Source; Mental Health of Children and Young People Survey, NHS 2023)

SIGNS TO LOOK OUT FOR

There are lots of different ways that poor mental health in young people can present.

This includes;

- Crying more than usual or persistent sadness
- Disrupted sleep patterns
- Difficulty in concentrating
- Losing interest in friends and other things they like doing
- Being reluctant to talk
- Irritability and aggression, particularly if this includes unprompted outbursts.
- Changes in appetite or rapid weight loss or weight gain.



THE NHS HAS MORE INFORMATION
ON SIGNS TO LOOK OUT FOR [HERE](#)

ADVICE AND SUPPORT

There are a number of services and charities that can offer advice and support on all areas of mental health in young people. Click on the logos to head straight to their website!

YOUNG MINDS

mind



NHS

NSPCC



FIND LOCAL MENTAL HEALTH SUPPORT [HERE](#)

**Place2Be's
CHILDREN'S
MENTAL HEALTH
WEEK**

**5-11
FEB
2024**

Key February dates

- Time to Talk day - 1st
- Children's Mental Health Week - 5-11th
- Safer Internet day - 6th
- Eating Disorders Awareness Week - 25th-2nd March

TIME TO TALK DAY, FIND OUT MORE [HERE](#)!

The Place2Be's Children's Mental Health Week takes place from the 5-11th February and aims to shine a spotlight on the importance of children and young people's mental health. Now in its ninth year, they hope to encourage more people than ever to get involved, spread the word, and raise vital funds for children's mental health.

Find out more about how you can get involved [here](#)!



LET'S GET SOCIAL



e-SERVICES

KEEPING US CONNECTED

'BYOD' Bring Your Own Device

We invite all students to bring in their own devices to connect to our school WiFi. This includes mobile phones, laptops, tablets and iPads.

If your child would like to take advantage of our 'BYOD' provision, please ensure you sign the 'ICT Acceptable Use Policy' letter and also fill out the 'New Technologies' consent form, both of which can be found at Student Reception.

Please hand back in to Student Reception upon completion in order to start using your devices.

EduLink

The EduLink App provides a convenient and accessible way for us to communicate with parents on some of the main aspects of daily school life.

It's easy to use and is accessible from a smart phone, tablet or PC. You can use the app to report an absence easily and also book appointments for your child's Parents' Evening.

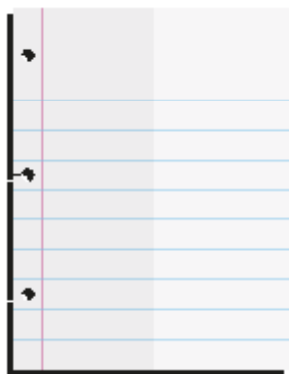
If you haven't already been issued with login details, please contact the EduLink team on the below email address edulinkapp@lutterworthhigh.co.uk If you need to register, click here.

NEED HELP?

If you have any queries or need IT assistance, do not hesitate to email eservices@lutterworthhigh.co.uk



OFFICE 365 - STUDENT ADVANTAGE & TEAMS



Stock up for academic success with free Office.

Students get a complete version of the latest Microsoft Office for free to use for as long as they're students!

Visit our the website and go to Menu - Students - Student Zone

DATES FOR YOUR DIARY

Thursday 15th February 2024 - Year 9 Options Evening

Thursday 7th March - Plan, Prepare, Achieve (Year 11)

Thursday 25th April - Year 11 Parents' Evening

Thursday 9th May - Year 7 Parents' Evening

Thursday 23rd May - Year 10 Parents' Evening

Tuesday 25th June - Summer Concert

Wednesday 26th June 2024 - Year 11 Prom

Thursday 27th June - New Parents' Information Evening

AUTUMN TERM 2023	FROM THE MORNING OF:	UNTIL THE END OF:
Autumn 1st half term	Tuesday 29 th August 2023	Friday 13 th October 2023
Mid-term break	Monday 16 th October 2023	Friday 20 th October 2023
Autumn 2nd half term	Monday 23 rd October 2023	Friday 22 nd December 2023 12.30pm

SPRING TERM 2024	FROM THE MORNING OF:	UNTIL THE END OF:
Spring 1st half-term	Tuesday 9 th January 2024	Friday 16 th February 2024
Mid-term break	Monday 19 th February 2024	Friday 23 rd February 2024
Spring 2nd half-term	Monday 26 th February 2024	Friday 22 nd March 2024

SUMMER TERM 2024	FROM THE MORNING OF:	UNTIL THE END OF:
Summer 1st half-term	Monday 8 th April 2024	Friday 24 th May 2024
May Day	Monday 6 th May 2024	Monday 6 th May 2024
Mid-term break	Monday 27 th May 2024	Friday 31 st May 2024
Summer 2nd half-term	Monday 3 rd June 2024	Wednesday 10 th July 2024

AUGUST TERM 2024	FROM THE MORNING OF:	UNTIL THE END OF:
Autumn 1st half term	Tuesday 27 th August 2024	Friday 18 th October 2024
Mid-term break	Monday 21 st October 2024	Friday 25 th October 2024
Autumn 2nd half term	Monday 28 th October 2024	Friday 20 th December 2024

SPRING TERM 2025	FROM THE MORNING OF:	UNTIL THE END OF:
Spring 1st half-term	Tuesday 7 th January 2025	Friday 14 th February 2025
Mid-term break	Monday 17 th February 2025	Friday 21 st February 2025
Spring 2nd half-term	Monday 24 th February 2025	Friday 11 th April 2025

SUMMER TERM 2025	FROM THE MORNING OF:	UNTIL THE END OF:
Summer 1st half-term	Monday 28 th April 2025	Friday 23 rd May 2025
May Day	Monday 5 th May 2025	Monday 5 th May 2025
Mid-term break	Monday 26 th May 2025	Friday 30 th May 2025
Summer 2nd half-term	Monday 2 nd June 2025	Wednesday 9 th July 2025