



@LuttHigh



LuttHigh



Lutterworth High School Academy Trust

Friday 24th November 2023



Dear Parents / Carers

Welcome to our weekly newsletter. For our Year 11 students this has been a busy week, with walking talking mocks. This is where the teachers guide the students through the examination skills required for their papers. I wish Year 11 all the best with their mock examinations which commence next week. I have been impressed by the students' commitment, with excellent attendance at after school revision sessions.

We look forward to welcoming our Year 8 parents to their Parents Evening on Thursday 30th November and Year 9 parents to their Parents Evening on Thursday 7th December.

There are many events coming up in the next couple of weeks, especially our annual show Bussy Malone. Tickets are still available to purchase.

Have a nice weekend.

Yours faithfully

Julian Kirby
Headteacher



NOTICEBOARD

HOT CHOC FRIDAY

Well done to the following students who have achieved a Hot Choc Friday award this week.



SCOPAY Alerts

To set up alerts so you can keep on top of your child's catering account.

- Log in to SCOPAY:- <https://www.scopay.com>
- Go to Menu
- Click on Alerts
- Click on "Click here to configure the alerts you receive"
- Tick the boxes to receive alerts and email
- <https://www.scopay.com/account/AlertConfiguration>

Job Vacancy

Fancy joining us? We have a Catering Assistant vacancy. Find out more and apply [here](#).

Top House Points

Toby Hopkins 9LB (41)	Freddie Theobald 8LE (76)	Mani Samrai 8LM (41)	Harry Meadwell-Ludlow 8LM (53)
Jack Osborne 11LSD (51)	Sophie Underwood 11HW (58)	Olivia Green 10LT (41)	Lianne Cooper 10HB (52)

Bike and Road Safety

This week is Road Safety Week. A reminder to all to be extra vigilant and stay safe when on and near the roadside.

Reading List

Please find the recommended reading lists for Years' 7-10 [here](#).

Let's talk about...

SPEED

“Slow traffic makes it safer for me to walk or cycle to school”

Every day, six children are killed or seriously injured on UK roads

25% of parents say traffic is too fast for their children to walk or cycle to school*

Whoever you are, however you travel, we need to talk about speed.

*Brake (2023) www.brake.org.uk/what-do-parents-think-about-their-childrens-journeys-to-school



Join the conversation
www.brake.org.uk/RoadSafetyWeek
#RoadSafetyWeek

ROAD
SAFETY
WEEK

Organised by
Brake
the road safety charity

Sponsored by
ARVAL
RUP PARTS GROUP

DHL

AUTOGLASS

Supporting
TYNOL

We raised...

£1141.52

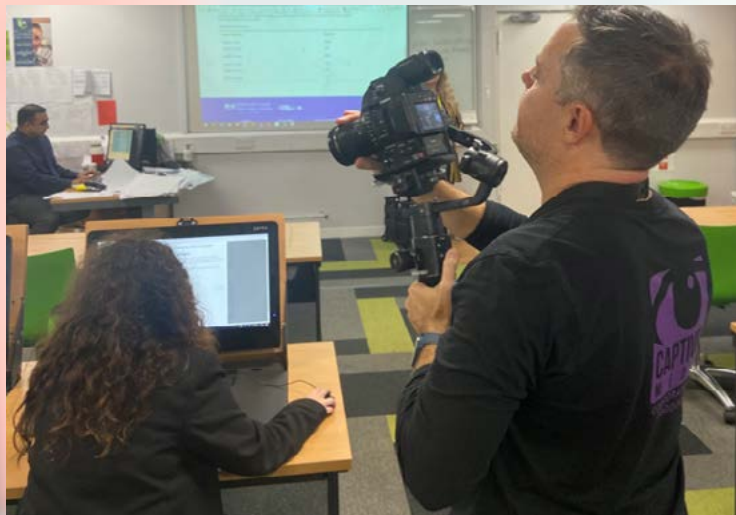
for Children in Need



NOTICEBOARD

SOCS Visit

On Tuesday, we were visited by SOCS who were filming a promotional campaign they are running. They visited a variety of co-curricular activities taking place and students loved getting involved. They also interviewed staff members on their experience with SOCS and The Emerald Way programme. We are excited to see the finished result.



HOW TO REPORT A CONCERN AT LUTTERWORTH HIGH SCHOOL



Tell a teacher, your tutor
or go to KS3/KS4 Hubs to
speak to a member of staff



Tell your parents or a friend,
who can report on your behalf



Forms outside KS3 and
post in the letterbox



Self report to
ks3@lutterworthhigh.co.uk
ks4@lutterworthhigh.co.uk



Speak Out button on
the school website
www.lutterworthhigh.co.uk/student

NOTICEBOARD

MAKE A MODEL SNOWMAN



Get in to the festive spirit by making a 3D Model Snowman!

(Drawings will be considered but ideally a 3D model is required).

Judged - (1st December) in The Learning Hub

Win!

1st prize - £10 Amazon voucher
2nd prize - Distinction award
3rd prize - Merit award

 Earn Emerald Way points 



**WOULD YOU LIKE TO DESIGN THE
OFFICIAL LHS CHRISTMAS CARD?**

 EARN EMERALD WAY POINTS 

DEADLINE - 1ST DECEMBER 2023

PLEASE HAND IN TO MRS M HUNTER IN D1

WIN!
1st prize - £25 Amazon Voucher
2nd Prize - £15 Amazon Voucher
3rd prize - £10 Amazon Voucher
★★★★★

**Christmas Card
Competition**

£25 PER PERSON

PROCEEDS TO THE SEND DEPARTMENT

LHS WREATH EVENING 2023

**WEDNESDAY 6TH DECEMBER 2023
6.30PM - 8.30PM**

**LUTTERWORTH HIGH SCHOOL,
WOODWAY ROAD, LUTTERWORTH, LE17 4QH**

All materials provided by a professional florist including refreshments and a mince pie!

Please bring your own gloves and secateurs.

Tickets to be purchased via Scopay online or from Main Reception.

Contact Jackie Hurr on jhurr@lutterworthhigh.co.uk
/01455 552710 to purchase tickets.



LUTTERWORTH HIGH SCHOOL
presents
ALAN PARKER'S BUGSY MALONE

BUGSY MALONE

[13-15 DECEMBER 2023, 7PM]
TICKETS NOW ON SALE!

CHRISTMAS APPEAL



**HELP SUPPORT YOUR FOOD BANK
WITH FOOD AND FUNDS THIS CHRISTMAS**

THANK YOU FOR YOUR SUPPORT

DONATE FOOD

Help by donating an item or two from our shopping list to ensure we can provide food to help people in crisis.



DONATE MONEY

Help to cover the costs of storing and distributing food, as well as developing sustainable projects.



SHOPPING LIST

Tinned Fruit & Veg
Instant Mash
Packet Custard
Tinned Spaghetti
Whole UHT Milk



Don't
forget...

You can help transform
more lives with a
financial donation too.

www.lutterworthvillages.foodbank.org.uk

Tel: 01455 558797

Email: info@lutterworthvillages.foodbank.org.uk

Facilitated by St Mary's Church, Lutterworth
Registered Charity in England & Wales (1134507)

WOW WORK

Year 10 and 11 students had an amazing lesson preparing and cooking mussels. The mussels were fresh and juicy, we even had some first time mussel tasters!





THE EMERALD WAY

CHARITY CORNER

Please find below a detailed plan of the chosen charities of Year 9. Students will be doing a variety of activities, raising awareness as well as funds, throughout their week for their chosen charity. Make sure to get involved in any way you can.

W/C 4th December - 9LA - [Cancer Research UK](#)

W/C 12th February - 9LN - [Teenage Cancer Research](#)

W/C 4th March - 9LB - [SSAFA, The Armed Forces Charity](#)

W/C 7th May - 9HM - [Young Minds](#)

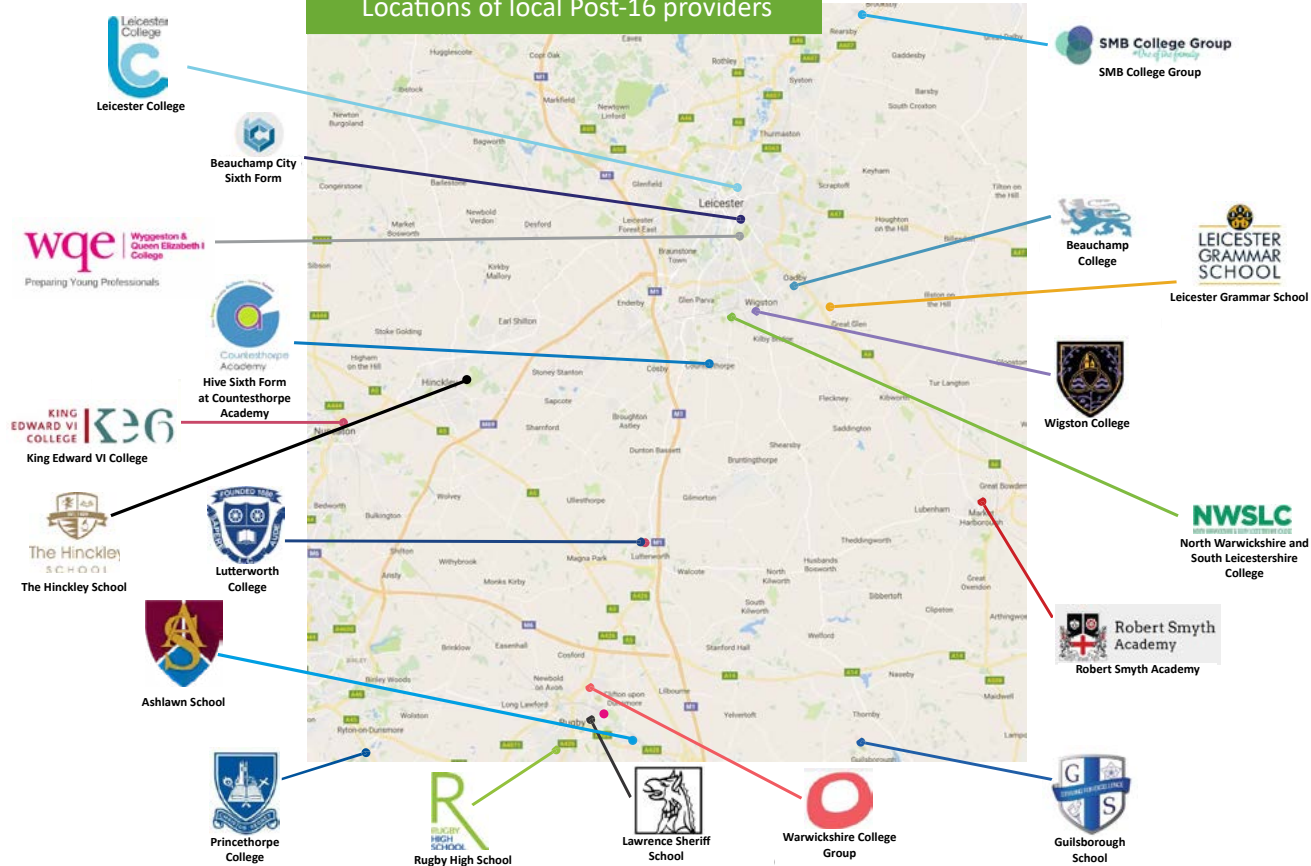
W/C 10th June - 9HO - [Dementia UK](#)



DISTINCTION AWARDS

George Aldridge 7LM	Florrie Hopkins 10LM
Erin Aldridge 10HE	Jacob Hudson 7HH
Toby Allen 7LC	Chloe Hurst 7LM
Charlotte Allen 10LM	Bronwen Jenkins 10LT
Fonzie Altuccini 10LT	Grace Jesson 10HE
Hubert Antoniewicz 10HB	Em Klapot 7LM
Ariana Asghar 7LM	Samuel Krzeminski 7HR
Giovanni Backus 7LM	Vivien Kudlicka 10LT
Stevie Bailey 10HL	Edie Lacey 7LM
Molly Baker 9LA	Sophie Lane 7LM
Trinity Barnes 9HO	Poppy Lane 10LT
Ruby Bartlett 10LK	Harrison Lewis 10LM
Zara Bell 7HA	Harrison Lockhart 7LM
Lucas Berry 10LK	Elliot Marston 7LM
Isla Blockley 7HR	Harry Meadwell-Ludlow 8LM
Emily Bradley 7HH	George Mears 10HL
Erin Brown 7LM	Julia Melville 10LT
Kieran Burton 10LK	Millie Moore 9LA
Oscar Campbell 10HB	Noah Morris 7LM
Lyla Clarke 7LM	Ben Nicholls 8LM
Pippa Clarke 7LM	Filip Ochal 10LM
Alfie Cook 10LM	Lillia Oliveti 9LB
Emily Cook 10LK	Jack Osborne 11LSD
Harvey Corcoran 11LFC	Isaac Peake 10LT
Tyler Devonshire 7LM	Brendan Pollock 10HB
James Dew 7LC	Tisya Rana 7LM
Lila Dimblebee 9LB	Ethan Richards 10HL
Lily Donovan 10HB	Dylan Rowley 7LM
George Draper 10HL	Harrison Scott 7LM
George East 10LK	William Selby 8HG
Harriet Ellis 10LK	Phoebe-Mae Sieling 9LB
William Emmett 7LM	Ollie Silvester 10LT
Asma Faizi 8LM	Maia Smart 7LM
Daniel Faulkner 10LM	Jack Spiby 7LM
Madison Finney 10LM	Tilly Stapleton 10HL
Harry Gagin 7LM	Harry Stenhouse 7HH
Lori Garton 7LM	Keira Sutton 7LM
Luke Gatrell 7LM	Henry Taylor 10HL
Alastair Gilbert 10LT	Jessie Thomas 7LM
Sam Glastonbury 10LT	Kaylen Townsend 10HE
Noah Goddard 7LM	Ezequiel Vieira 7HH
Henry Golding 10LT	Seb Vladimirescu 10HB
Charlie Gooch 10LT	Keeley Ware 10HL
Sylvia-Mae Gray 7LM	Bradley Watson 8HG
Tom Gray 7LM	Sophia Williams 10LT
Olivia Green 10LT	Jack Williamson 10LT
Sophie Gregory 8LM	Lilia Young 10LT
Myles Hainsworth 7LM	
Amelie Hall 7HA	
Toby Hardwick 10LK	
Hayden Harwood 10HB	
Alex Holyoak 8LE	

Locations of local Post-16 providers



Post-16 Providers - Open Days/Evenings

[Leicester College](#)

Saturday 25th November 10.00am-2.00pm

Career Days - Community Notice

Students can visit www.careerdays.co.uk to join a session in their field of interest and will receive a certificate at the end of the day confirming their work experience.

ART MOCK	Wednesday 22 nd November	Thursday 23 rd November	Friday 24 th November
Monday 20 th November (Class 11D)	English Walking Talking Mock Period 1-2	History Walking Talking Mock Period 1-2	English Walking Talking Mock Period 1-2
Tuesday 21 st November (Class 11E)	Maths Walking Talking Mock Period 3-4	Science Walking Talking Mock Period 3-4	Geography Walking Talking Mock Period 5-6

	Monday 27 th November	Tuesday 28 th November	Wednesday 29 th November	Thursday 30 th November	Friday 1 st December
P1 –2	English Language Paper 1 1hr 45m	Science - BIOLOGY Separate science 1hr 45m Combined 1hr 15m	History Paper 1 2hrs	Science – CHEMISTRY Separate science 1hr 45m Combined 1hr 15m	English Language Paper 2 1hr 45m
Break					
P3-4					
Lunch					
P5-6	Maths Non-Calculator Paper 1hr 30m	Geography Paper 1 1hr 30m	Enterprise & Marketing 1hr 15m Dance 1hr 30m	Maths Calculator Paper 1hr 30m	History Paper 2 1hr

	Monday 4 th December	Tuesday 5 th December	Wednesday 6 th December	Thursday 7 th December	Friday 8 th December
P1 –3	RE 1hr 45m	Design Technology 2hr Food and Nutrition 1hr 45m	Science – PHYSICS Separate science 1hr 45m Combined 1hr 15m	French Reading/writing Spanish Reading/writing Foundation R=45 mins /W=1 hr Higher R=1hr/W=1h15m	Business 1hr 45m Drama 1hr 45m Catch up session 2
Break	Periods 1,2,3 then break				
P4		Catch up session 1			
Lunch	Normal lunch				
P5-6 1:30pm start	Geography Paper 2 1hr 15m	French Listening Foundation 35min Higher 45mins	Spanish Listening Foundation 35min Higher 45mins	Creative imedia 1hr 30m Computer Science 1hr 30m PE 1 hr --- Music 1hr 15m	

SPORTS HIGHLIGHTS

Netball Results

Wednesday 22nd November V Welland Park away.

Y11 B played a fantastic match against Welland Park, it was very evenly contested.

The score was 7 - 8 to Welland Park, Lutterworth just unable to score the necessary goal in the dying minutes.

Players player: Charlotte Wells

Coaches player: Annabel Haynes and Tara Matanovic

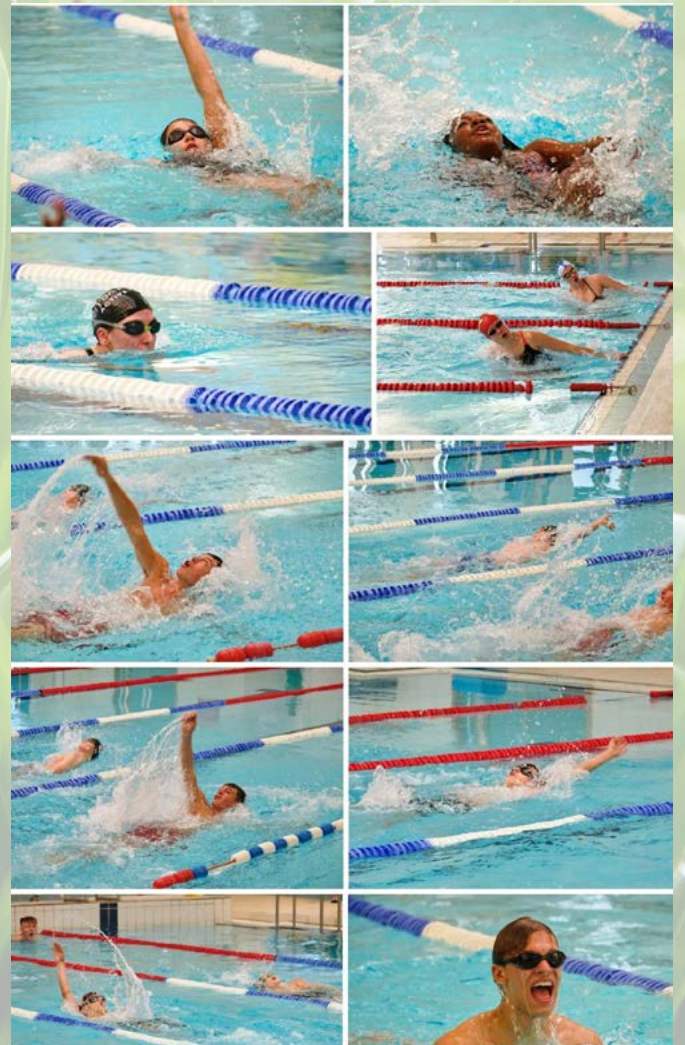
Annual Swimming Gala

The annual Swim Gala took place last Friday.

Over 100 students took part. The Gala was close all the way through with Tedder being crowned overall champions at the end.



Results

1. Tedder
2. Monty
3. Cunningham
4. Churchill



ACTIVITY OVERVIEW - TERM 2

Days	Lunch 12.30-1.15pm	After School 3.00pm 3.00-4.00pm/4.15pm/4.30pm
Monday	12:30-13:15 Christian Union 12:45-13:00 Prom Committee	15:00-16:30 Basketball 10 15:00-16:30 Buggy Malone Prop Making 15:00-16:30 Buggy Malone School Production 15:00-16:30 House Dodgeball - Year 7 15:00-16:30 KS4 Art Club 15:00-16:30 Netball 10 15:00-16:30 Netball 11 15:00-16:30 Netball 7 15:00-16:30 Netball 8 15:00-16:30 Netball 9 15:00-16:30 Rugby 7 15:10-16:00 Science7
Tuesday	12:30-13:15 Minecraft Club 12:45-13:15 Lego Club	15:00-16:00 Dance Club 9-11 15:00-16:15 Girls Rugby 15:00-16:15 Rugby 9/10 15:00-16:30 Baking Club 15:00-16:30 Basketball 8 15:00-16:30 House Dodgeball - Year 8 15:00-16:30 Rugby 8 15:00-16:30 Textiles Workshop 15:00-17:00 Miniatures and Tabletop Games 15:05-16:00 Silver DofE
Wednesday	12:30-13:10 Pride Club	15:00-16:00 Bronze DofE 15:00-16:30 Basketball 7 15:00-16:30 Buggy Malone School Production 15:00-16:30 House Dodgeball - Year 9 15:10-16:00 Textiles Art Club 15:10-16:10 STEM Club 15:15-16:35 Cross Country Club
Thursday	12:30-13:15 Language Leadership Award 12:30-13:15 Minecraft Club 12:40-13:10 Choir	15:00-16:00 Dance Club 7-8 15:00-16:00 Starbooks Cosy Reading Club 15:00-16:15 The Games 15:00-16:30 Art Drop in Session 4 15:00-16:30 Buggy Malone Band 15:00-16:30 Card Games 15:00-16:30 House Dodgeball - Year 10/11 15:00-16:30 KS3 Art Club 15:00-16:30 Rugby 11 15:00-16:30 Textiles Workshop
Friday	12:45-13:15 Debate Society	

MONDAY	TUESDAY	WEDNESDAY	THURSDAY
<div>  <div> AFTER SCHOOL 15:00-16:30 </div>  </div>			
Boys Rugby Yr.7 (MHO)	Boys Rugby Yr.9 + 10 (JJO)	Boys Rugby Yr.8 (TWH)	Boys Rugby Yr.11 (TWH)
Mixed Basketball Yr.10 (AMT)	Mixed Basketball Yr.8 (AMT)	Mixed Basketball Yr.7 (MHO)	
Netball All Years (ZTU)	Girls Rugby Yr.7-11 (TWH)		
	Dance Yr.9-11 (KBA)		Dance Yr.7-8 (KBA)
		Mixed XC Yr.7-11 (MNA)	The Games Invite Only (STO)

COMMUNITY NOTICES

Have your say...



Leicester, Leicestershire
and Rutland



Public Consultation

Have your say on proposed improvements to health services
in Lutterworth



Attend one of our public events



Complete our questionnaire online:
www.haveyoursaylutterworth.co.uk



Email your views: llricb-llr.beinvolved@nhs.net



Telephone us on: 0116 295 7572

Pick up a leaflet in venues across Lutterworth and surrounding areas

COMMUNITY NOTICES



Oadby and Wigston Swimming Club

Do you like to swim?
Want to swim faster?
Want to have fun while
swimming as part of a team?

*Come and try out
for* **OWSC**

Why pick OWSC to start your competitive journey?

- We place the athlete at the heart of every session.
- We will support each athlete to enrich their physical and mental well-being through their swimming.
- We will support them to develop their confidence and social skills, and encourage them to work together as a team.
- We work to ensure that swimming compliments the athlete's other hobbies and support them to participate in all their interests.
- We use a diverse and structured coaching programme that works to get the very best from every athlete.
- We support every athlete on their competitive swimming journey however far they may wish to pursue the sport.
- We will provide swimmers the opportunity to participate in competitions, club social events and more...

We coach a range of abilities. Scan the QR code to get more information and sign yourself up to a free assessment!



owswimclub.org



info@owswimclub.org



[@owswimclub](https://twitter.com/owswimclub)



[owswimclub](https://facebook.com/owswimclub)

07969139305



e-SERVICES

KEEPING US CONNECTED

'BYOD' Bring Your Own Device

We invite all students to bring in their own devices to connect to our school WiFi. This includes mobile phones, laptops, tablets and iPads.

If your child would like to take advantage of our 'BYOD' provision, please ensure you sign the 'ICT Acceptable Use Policy' letter and also fill out the 'New Technologies' consent form, both of which can be found at Student Reception.

Please hand back in to Student Reception upon completion in order to start using your devices.

EduLink

The EduLink App provides a convenient and accessible way for us to communicate with parents on some of the main aspects of daily school life.

It's easy to use and is accessible from a smart phone, tablet or PC. You can use the app to report an absence easily and also book appointments for your child's Parents' Evening.

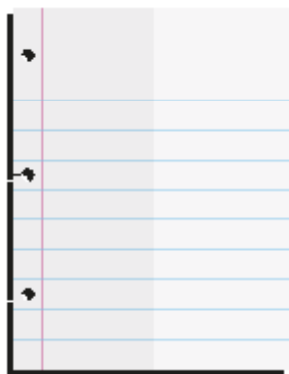
If you haven't already been issued with login details, please contact the EduLink team on the below email address edulinkapp@lutterworthhigh.co.uk If you need to register, click here.

NEED HELP?

If you have any queries or need IT assistance, do not hesitate to email eservices@lutterworthhigh.co.uk



OFFICE 365 - STUDENT ADVANTAGE & TEAMS



Stock up for academic success with free Office.

Students get a complete version of the latest Microsoft Office for free to use for as long as they're students!

Visit our the website and go to Menu - Students - Student Zone



AUTUMN TERM 2023	FROM THE MORNING OF:	UNTIL THE END OF:
Autumn 1st half term	Tuesday 29 th August 2023	Friday 13 th October 2023
Mid-term break	Monday 16 th October 2023	Friday 20 th October 2023
Autumn 2nd half term	Monday 23 rd October 2023	Friday 22 nd December 2023

SPRING TERM 2024	FROM THE MORNING OF:	UNTIL THE END OF:
Spring 1st half-term	Tuesday 9 th January 2024	Friday 16 th February 2024
Mid-term break	Monday 19 th February 2024	Friday 23 rd February 2024
Spring 2nd half-term	Monday 26 th February 2024	Friday 22 nd March 2024

SUMMER TERM 2024	FROM THE MORNING OF:	UNTIL THE END OF:
Summer 1st half-term	Monday 8 th April 2024	Friday 24 th May 2024
May Day	Monday 6 th May 2024	Monday 6 th May 2024
Mid-term break	Monday 27 th May 2024	Friday 31 st May 2024
Summer 2nd half-term	Monday 3 rd June 2024	Wednesday 10 th July 2024