



LUTTERWORTH  
HIGH SCHOOL

AN 11~ 16 ACADEMY TRUST



Plan  
Prepare  
Achieve



# Personalised revision folder

- Examination handbook - Examination rules and regulations
- Personalised Intervention plan
- Revision Timetable, including Easter revision
- Exam entry statements - Dates and times of examinations
- Information on contingency day
- Exam and syllabus codes (google past papers)
- Mini bus information

Please sign and return the letter in the packs

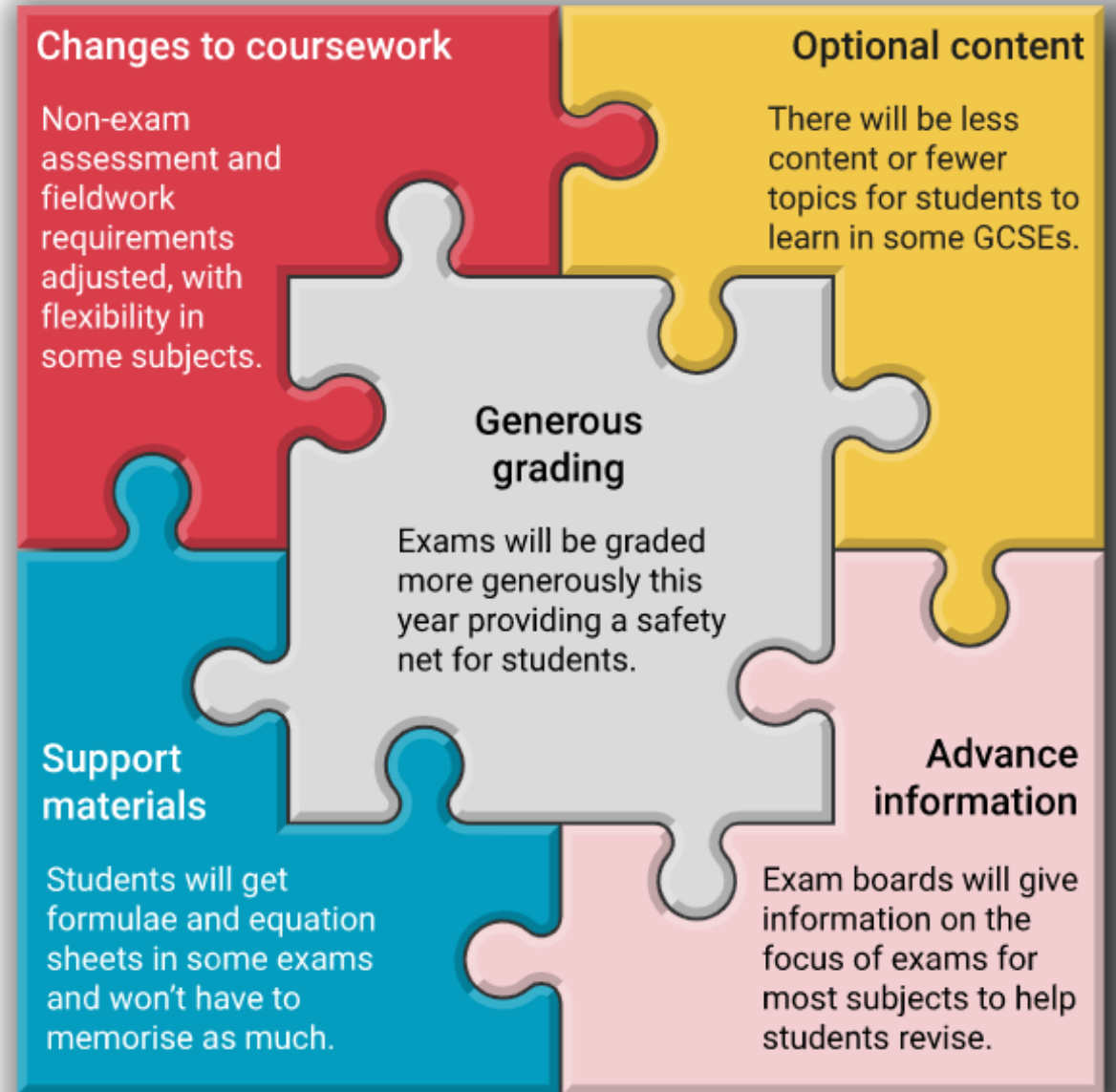
# What is available for you this evening?



- How to revise - A parents Guide  
6.30-7.00pm & 7.15-7.45pm in Learning Hub
- Exam procedure advice
- Exam concessions
- Wellbeing and support
- Subject advice from Maths,  
English and Science
- Revision guide ordering and stationery
- NCS – National Citizen Service
- Password station



# Additional support for exams in 2022





- Year 11, 11NW, MONTGOMERY

Mon 7 Mar	Tue 8 Mar	Wed 9 Mar	Thu 10 Mar	Fri 11 Mar
08:50-09:40 Academic Maths (ROOM 4 MATHS)	08:50-09:40 Academic Ict (ROOM 13)	08:50-09:40 Academic English (ENGLISH ROOM 2)	08:50-09:40 Academic English (ENGLISH ROOM 2)	08:50-09:40 Academic English Literature (ENGLISH ROOM 2)
09:40-10:30 Academic Maths (ROOM 4 MATHS)	09:40-10:30 Academic Ict (ROOM 13)	09:40-10:30 Academic English (ENGLISH ROOM 2)	09:40-10:30 Academic English (ENGLISH ROOM 2)	09:40-10:30 Academic Science (ROOM 3 MATHS)
10:50-11:40 Academic Science (ENGLISH ROOM 5)	10:50-11:40 Academic Food Technology (D7 Cookery Room)	10:50-11:40 Academic Maths (ROOM 4 MATHS)	10:50-11:40 Academic Maths (ROOM 4 MATHS)	10:50-11:40 Academic History (ROOM 11 HUMANITIES)
11:40-12:30 Academic Science (ROOM 16 SCIENCE)	11:40-12:30 Academic Food Technology (D7 Cookery Room)	11:40-12:30 Academic Maths (ROOM 4 MATHS)	11:40-12:30 Academic Ict (ROOM 13)	11:40-12:30 Academic History (ROOM 11 HUMANITIES)
13:20-14:10 Academic Enterprise and Marketing (English Room 7)	13:20-14:10 Academic Science (D3 GENERAL TEACHING ROOM)	13:20-14:10 Academic Science (D3 GENERAL TEACHING ROOM)	12:30-13:15 CoCurricular LHS Podcast (COMPUTER SUITE R13)	13:20-14:10 Academic Pe (GYMNASIUM)
14:10-15:00 Academic Enterprise and Marketing (English Room 7)	14:10-15:00 Academic Enterprise and Marketing (English Room 7)	14:10-15:00 Academic Food Technology (D6 Computing)	13:20-14:10 Academic History (ROOM 11 HUMANITIES)	14:10-15:00 CoCurricular English Friday P6 - Mr Bowden (E6)
15:15-16:00 CoCurricular History - Normans (ROOM 11)		15:10-16:00 CoCurricular Maths Higher 2 (ROOM 3)	14:10-15:00 Academic Science (D3 GENERAL TEACHING ROOM)	14:10-15:00 Academic Pshe (ROOM 13)
			15:00-16:00 CoCurricular English Intervention (E2)	15:10-16:00 CoCurricular Food - Written Exam Preparation (D3)

## Personalised Intervention Plan

- Recommended revision support
- Additional sessions can be attended if desired.
- Sign up on SOC's
- Clashes are identified, help students to prioritise



**Y11 Mock Exams March 2022**



	Monday 21 <sup>st</sup> March	Tuesday 22 <sup>nd</sup> March	Wednesday 23 <sup>rd</sup> March	Thursday 24 <sup>th</sup> March	Friday 25 <sup>th</sup> March
P1 –3	Maths – non calculator 1hr 30mins	Combined science – Physics 1hr 15mins Physics 1hr 45mins	Combined science – Biology 1hr 15mins Biology 1hr 45mins	English Literature <i>An Inspector Calls/Jekyll &amp; Hyde/Power and Conflict</i> 1hr 40mins	Combined science – Chemistry 1hr 15mins Chemistry 1hr 45mins
Break	Periods 1,2,3 then break				
P4					
Lunch	Normal lunch				
P5-6 1:30pm start	English Literature <i>(Unseen poetry)</i> 1hr	Maths - Calculator 1hr 30mins	Geography 1hr  Statistics 30mins	Business Studies 1hr 30mins	History 1hr

Walking talking mocks –  
Thursday 17<sup>th</sup> March

Mock Examinations – W/C  
21<sup>st</sup> March

English Literature, Maths,  
Science, Geography, History,  
Business Studies, RE

Easter revision

# GCSE MATHEMATICS REVISION PROGRAMME 2022

Dates		Topic (At tier)	Resources	Additional Information
Monday Revision Foundation—Room 1 Higher—Room 2	Wednesday Revision Foundation—Room 6 Higher—Room 5 Further—Room 4	<b>W/C Monday 14th March</b> June 2018—Paper 1	Morning session using the 5-a-day resources from CORBETTMATHS.COM. This is in Room 1 from Tuesday 15th March - 8 - 8.30am - every day.	<b>Subject</b> AQA GCSE Mathematics 8300 AQA GCSE Further Maths 8360
Monday Revision Foundation—Room 1 Higher—Room 2	Wednesday Revision Foundation—Room 6 Higher—Room 5 Further—Room 4	<b>W/C Monday 21st March</b> June 2018—Paper 2		<b>Examinations</b> Paper 1: Non-calculator Friday 20th May—am Paper 2: Calculator Tuesday 7th June—am Paper 3: Calculator Monday 13th June—am Further Maths Paper 1—Wednesday 8th June pm Further Maths Paper 2—Wednesday 22nd June pm
Monday Revision Foundation—Room 1 Higher—Room 2	Wednesday Revision Foundation—Room 6 Higher—Room 5 Further—Room 4	<b>W/C Monday 28th March</b> June 2018—Paper 3		<b>Resources:</b> Past papers: Sets June 2018 and November 2018 5-a-day booklets <b>Extra Support</b> <a href="https://corbettmaths.com">https://corbettmaths.com</a> <a href="https://connect.collins.co.uk/school/LUTTERWO1/Student/">https://connect.collins.co.uk/school/LUTTERWO1/Student/</a> MyMaths
Monday Revision Foundation—Room 1 Higher—Room 2	Wednesday Revision Foundation—Room 6 Higher—Room 5 Further—Room 4	<b>W/C Monday 4th April</b> November 2018 - Paper 1		
Monday Revision Foundation—Room 1 Higher—Room 2	Wednesday Revision Foundation—Room 6 Higher—Room 5 Further—Room 4	<b>W/C Monday 25th April</b> November 2018—Paper 2		

# Easter Revision 2022

## Easter Revision Timetable

Monday 11<sup>th</sup> April to Friday 22<sup>nd</sup> April 2022

Date	10.00AM-12.00PM	1.00-3.00PM
Monday 11 <sup>th</sup> April	Business French PE	Geography French
Tuesday 12 <sup>th</sup> April	History (Germany) Maths (Foundation)	Maths (Higher)
Wednesday 13 <sup>th</sup> April	History (Normans)	Art
Thursday 14 <sup>th</sup> April		
Easter Weekend		
Tuesday 19 <sup>th</sup> April	Biology (Foundation and Higher)	Physics (Foundation and Higher)
Wednesday 20 <sup>th</sup> April	Food and Nutrition RE	
Thursday 21 <sup>st</sup> April	Chemistry (Foundation and Higher)	English
Friday 22 <sup>nd</sup> April	Design Technology Business Studies	



# 5 STEPS TO SUCCESS



Attend the revision session

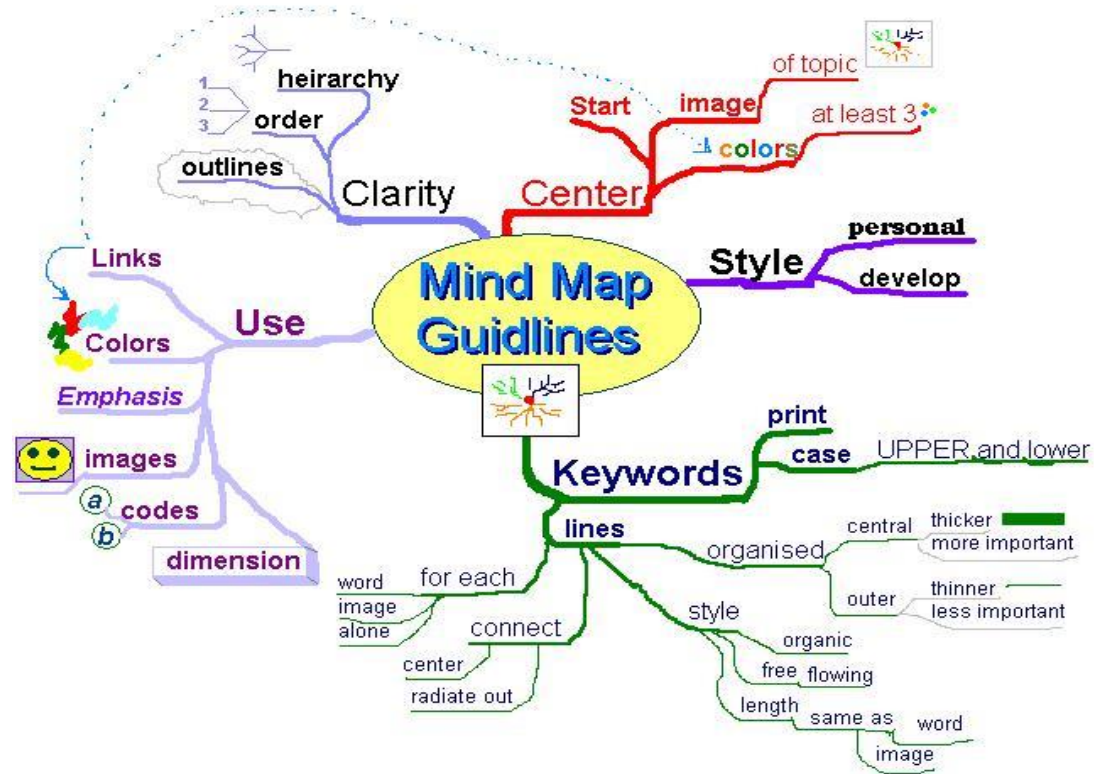


# 5

# STEPS TO SUCCESS



Actively revise the topic



# 5 STEPS TO SUCCESS



Actively revise the topic



# 5 STEPS TO SUCCESS



Actively complete the revision tasks set by your teachers



Classroom



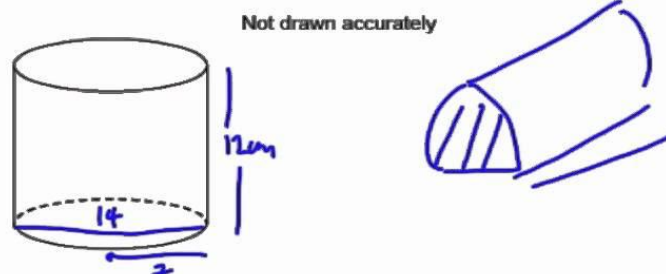
# 5 STEPS TO SUCCESS



Complete a past paper question

6 The diagram shows a cylinder.  
The diameter of the base is 14 cm.  
The height is 12 cm.

Not drawn accurately



Work out the volume of the cylinder.  
Give your answer to a suitable degree of accuracy.

Area of  $O = \pi \times 7^2$   
 $= 49\pi$

Volume =  $49\pi \times 12$   
 $= 1847\text{cm}^3$

Answer .....  $\text{cm}^3$  (4 marks)  
Extend Page

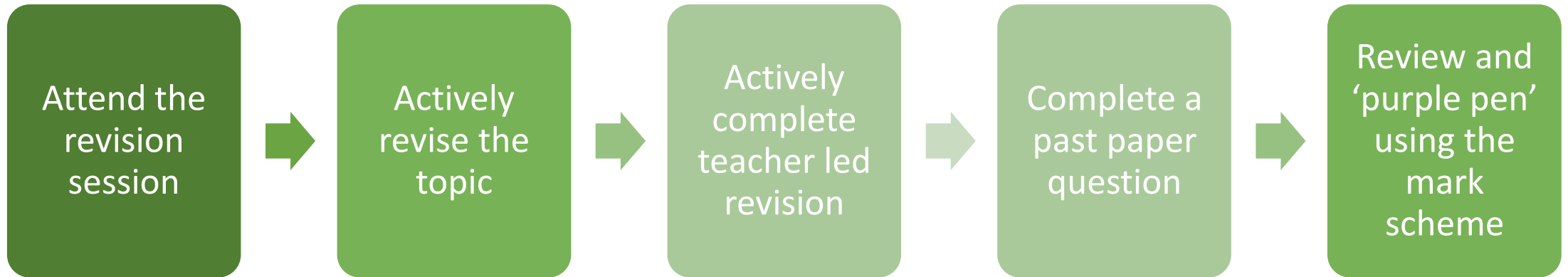
# 5 STEPS TO SUCCESS



Review and 'purple pen' using the  
mark scheme

*Purple Pen..!*

# 5 STEPS TO SUCCESS





# Revision in school

- No study leave
  - Re-timetable to revise the subject before the examination
  - Students do not need to attend school after their last examination
  - Supervised quiet study in classes where the examination is finished
  - Breakfast 'boost' revision sessions immediately prior to morning exams
- 
- Last formal day of school: Friday 24<sup>th</sup> June
  - Contingency day is 29<sup>th</sup> June 2022
  - Leavers assembly after Physics exam on Thursday 23<sup>rd</sup> June
  - Prom on Wednesday 29<sup>th</sup> June



# Exam stress symptoms

- Difficulty getting to sleep or difficulty waking up in the morning
- Constant tiredness
- Forgetfulness
- Unexplained aches and pains
- Poor appetite
- Loss of interest in activities
- Increased anxiety and irritability
- Increased heart rate
- Migraines/headaches
- Blurred vision
- Dizziness



# Managing the stress



- Know that exams are stressful!
- Learning to recognise when you're stressing out
- Avoid comparing your abilities with your mates
- Eat right
- Sleep well
- Exercise
- Steer clear of any exam 'post-mortem'

**Final Exam**



# Achieving well in the exams



## DO'S & DON'TS



**Eat well**

**Sleep well**

**Check key terms, quotes or definitions**

**Use your own revision notes**

**Set your alarm clock**

**Have breakfast**

**Keep hydrated**

**Find a space to study**

**Believe in yourself!**

**Skip meal times**

**Stay up late**

**Read the text book**

**Get up late – avoid rushing**

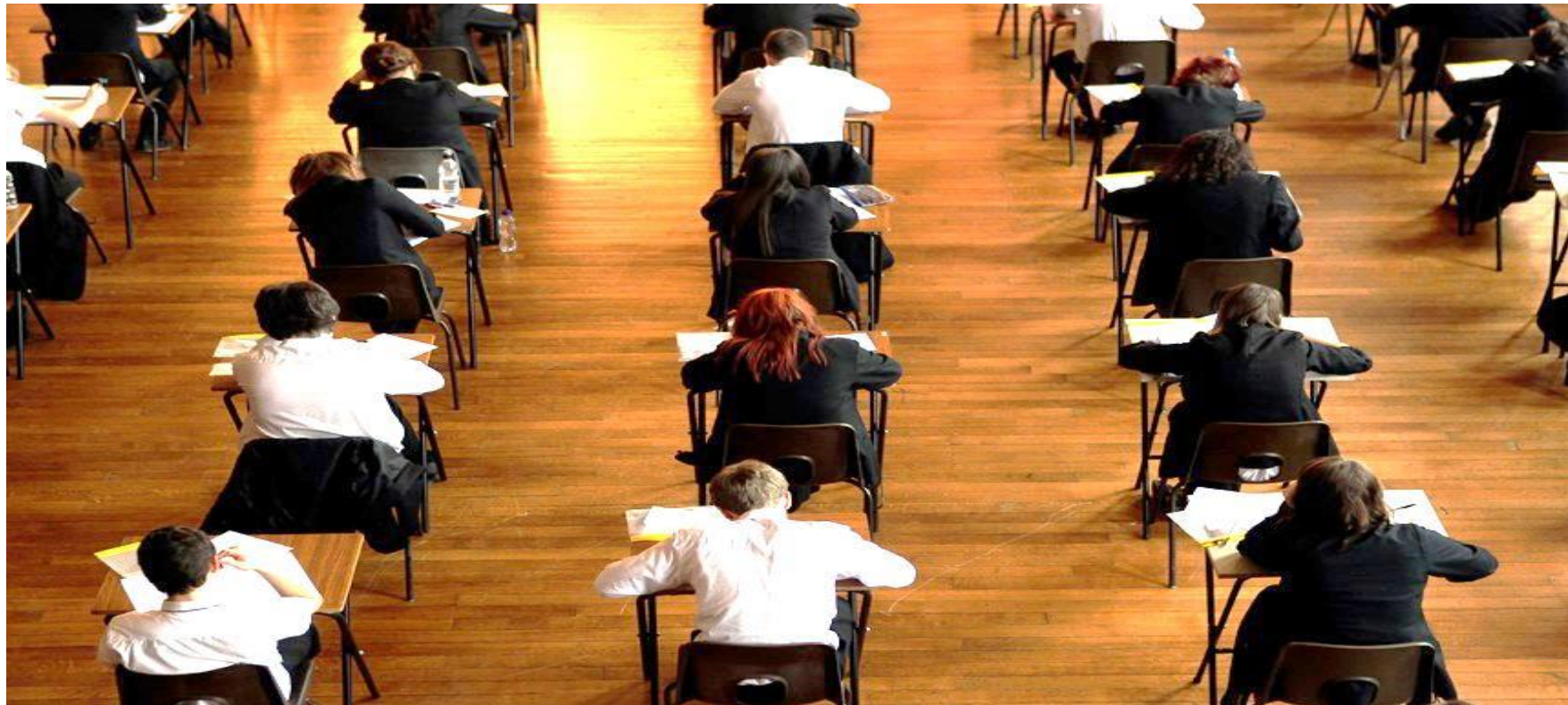
**Arrive late for the exam**

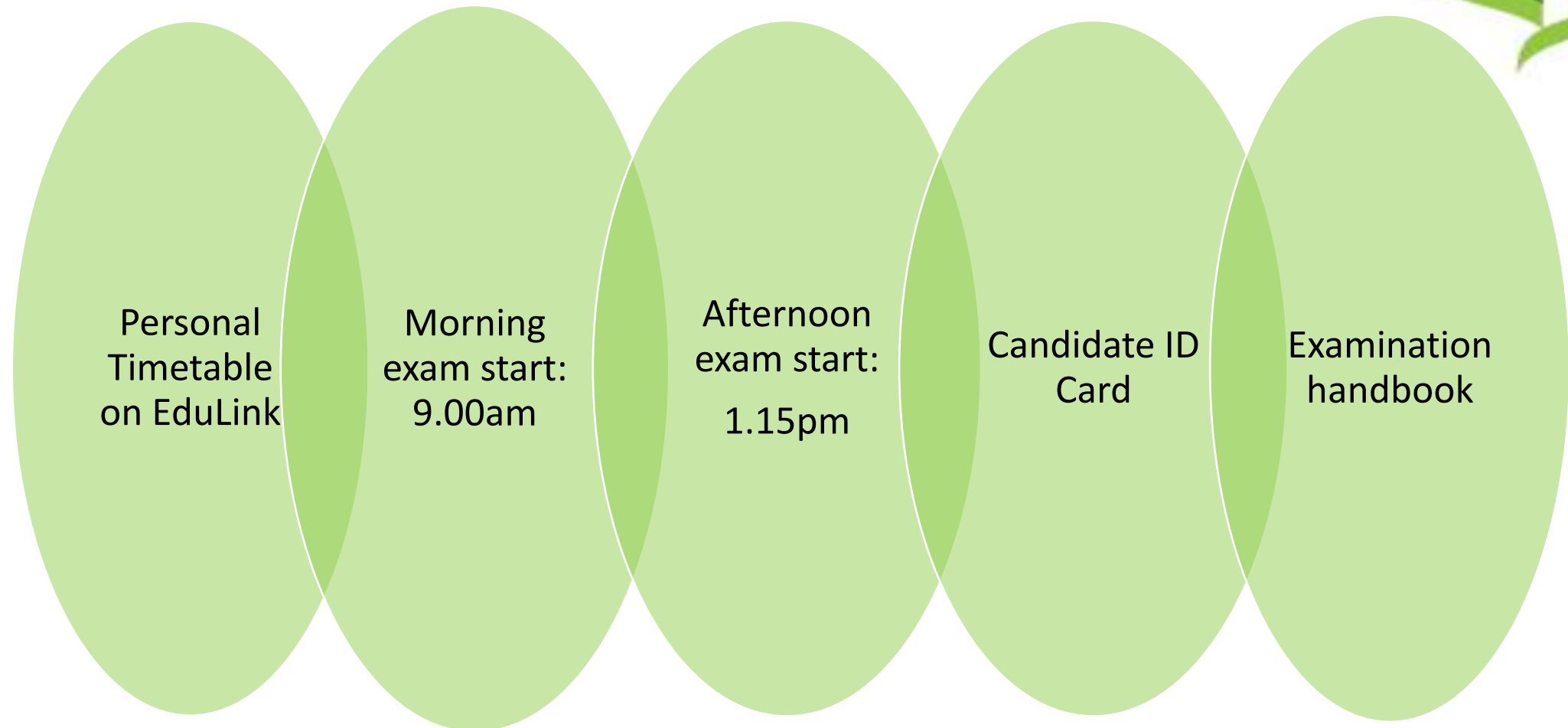
**Forget breakfast**

**Compare your preparation with others**

**Convince yourself you will fail**

# Administration





Personal  
Timetable  
on EduLink

Morning  
exam start:  
9.00am

Afternoon  
exam start:  
1.15pm

Candidate ID  
Card

Examination  
handbook



# Equipment:

- 2 BLACK biro pens (No 'gel' pens)
  - a pencil
  - an eraser
  - a ruler
  - a pencil sharpener
  - see through pencil case
  
  - For certain exams, such as Mathematics, Geography and Science, you will also need:
    - a compass
    - a protractor
    - a calculator (No lid)
- Water in a clear plastic bottle-no label**  
**No watches or phones**

# Illness or Injury



- Not attending the exam even due to illness has to be the last resort
  - If you don't sit an exam, you can't get marks for that element of the specification
- No longer use 'Teacher Assessed Grades'
- Inform school at the earliest opportunity
- Parent/Carer to make sure a message is given directly to Jane Moore : Examination Officer
- A doctors/hospital note is necessary for an application for special consideration
- Maximum consideration is only up to 5% and this is in the most exceptional cases



# Late to the exam....

- All candidates must arrive a minimum of ten minutes before the examination
- If you do run late, reception should be notified ASAP. The students and any adults with them, must switch off mobile devices and have no access to the internet.
- If the exam is finished a student cannot sit the exam
- If the exam is still in progress a student may sit the paper however a report has to be submitted and paper may not be marked
- A student is not able to leave early - even if they have finished





# Malpractice



## JCQ Examples of Malpractice Penalties

Type of offence	Warning	Loss of marks for paper	Loss of aggregation or certification opportunity
<b>Introduction of unauthorised material into the examination room, for example:</b>			
Own blank paper	used for rough work	used for final answers	
Calculators, dictionaries (when prohibited)	not used	used or attempted to use	
Bringing into the examination room notes in the wrong format or prohibited annotations	notes/annotations go beyond what is permitted but do not give an advantage; notes irrelevant to subject	Notes/annotations are relevant and give an unfair advantage	notes/annotations introduced in a deliberate attempt to gain an advantage
Mobile phone or similar electronic devices (including iPod, MP3 player, memory sticks, Smartphone, smartwatch)	not in the candidate's possession but make a noise in the examination room	in the candidate's possession but no evidence of being used by the candidate	In the candidate's possession and evidence of being used by the candidate
<b>Breaches of examination conditions</b>			
A breach of the instructions or advice of an invigilator, supervisor, or the awarding body in relation to the examination rules and regulations	minor non-compliance: e.g. sitting in a non-designated seat; continuing to write for a short period after being told to stop	major non-compliance; e.g. refusing to move to a designated seat; significant amount of writing after being told to stop	related non-compliance
Failing to abide by the conditions of supervision designed to maintain the security and integrity of the examinations	leaving examination early (no loss of integrity); removing script from the examination room, but evidence of the integrity was maintained	removing script from examination room but with no proof that the script is safe; taking home materials	deliberately breaking a timetable clash supervision arrangement; removing script from the examination room and with proof that the script has been tampered with; leaving examination room early so integrity is impaired
Disruptive behavior in the examination room or assessment session (including use of offensive language)	minor disruption lasting a short time; causing noise, turning around	repeated or prolonged disruption; unacceptably rude remarks; being removed from the examination room; taking another's possessions	Warnings ignored; provocative or aggravated behavior; repeated or loud offensive comments; physical assault on staff or property
<b>Exchange, obtaining, receiving, or passing on information which could be examination related (or the attempt to):</b>			
Verbal communication	isolated incidents of talking before the start of examination or after papers have been collected	talking during examination about matters not related to exam; accepting examination related information	talking about examination related matters during the exam; whispering answers to questions
Communication	Passing/receiving written communications which clearly have no bearing on the assessment	accepting assessment-related information	passing assessment related information to other candidates; helping one another; swapping scripts
<b>Offences relating to the content of candidates' work</b>			
The inclusion of inappropriate, offensive or obscene material in scripts, controlled assessments, coursework, non-examination assessments or portfolios	isolated words or drawings, mildly offensive, inappropriate approaches or responses	Frequent mild obscenities or drawings; isolated strong obscenity; isolated mild obscenities or mildly offensive comments aimed at the examiner or member of staff	Offensive comments or obscenities aimed at a member of staff, examiner or religious group; homophobic, transphobic, racist or sexist remarks or lewd drawings



# Afternoon Transport

- Some afternoon exams are scheduled to finish after 3.00pm
  - Check your personal timetable
  - Unusually high number of longer afternoon exams this year
  - Extra time concessions
- Buses cannot be held and alternative arrangements should be made



# Event map

**Learning Hub**

How to revise – A parents guide  
6.30pm – 7.00pm & 7.15pm to 7.45pm

**Main Hall**

Presentations – 6.00pm and 6.45pm

**Gym**

Revision Marketplace  
English, Maths and Science  
Student Support  
Wellbeing/ SEND  
Examination administration advice  
Revision Shop  
NCS

Black rectangular area with a blue arrow pointing up and another blue arrow pointing left.

Black rectangular area containing icons for GENTS and LADIES.

**Entrance Foyer**

Revision Folders and Password Station

Refreshments

